




E Series NDI® Video Encoder

USER MANUAL

Legal Notices

Subject to the receiving of this document from Changsha Kiloview Electronics Co., Ltd.,(Hereinafter referred to “Kiloview”), the following terms are understood and agreed. Or else, please stop using this document.

This document is copyright of Kiloview, all rights reserved. The document covers the proprietary information of the company. No company or individual may copy, transmit, distribute, use or disclose the document and any images, forms, data and other information contained in the document without the prior written permission of the company.

 *is the registered trademark of Kiloview. The name and logo are the trademarks or registered trademarks of the company. Other products or company names mentioned in this document may be the trademarks or registered trademarks of their respective owners. The reading of this document without the prior written consent of the company or the third party rights holder does not imply that the reader is given any right to use any of the marks appearing in this document by implication, non-evidence or otherwise.*

This product complies with the design requirements related to environmental protection and personal safety. The storage, usage and disposal of the product shall be in accordance with the product manual, relevant contract or relevant national laws and regulations.

This document is provided "as is" and "only in this state". Products and technical updates are subject to change without prior notice.

For matters not covered in this document, please visit our website www.kiloview.com for information and technical support.

NDI[®] is a registered trademark of NewTek, Inc..

CONTENTS

1 PRODUCT INTRODUCTION.....	1
1.1 ADVANTAGES.....	1
1.2 PARAMETERS.....	2
2 OPERATION GUIDANCE.....	3
3 PACKING LIST AND INTERFACE DESCRIPTION.....	4
3.1 PACKING LIST.....	4
3.2 INTERFACE DESCRIPTION.....	4
3.3 SIGNAL INDICATOR.....	5
4 INSTALLATION AND CONNECTION.....	6
4.1 POWER CONNECTION.....	6
4.2 VIDEO SIGNAL CONNECTION.....	6
4.3 NETWORK CONNECTION.....	6
5 LOGIN AND NETWORK CONFIGURATION.....	7
5.1 LOGIN TO THE DEVICE THROUGH ETHERNET.....	7
5.2 NETWORK CONFIGURATION.....	8
5.3 CONVENIENT MANAGEMENT FUNCTIONS.....	9
5.4 ANDROID APP.....	10
6 NDI DISCOVER AND CONFIGURATION.....	12
6.1 NDI HX DRIVER INSTALLATION.....	12
6.2 NDI DISCOVER AND CONNECTION.....	13
6.3 MODIFY NDI DEVICE NAME AND CHANNEL NAME.....	14
6.4 MODIFYING NDI BIT RATE.....	14
6.5 DISCOVERY SERVICE.....	15
7 PARAMETERS CONFIGURATION.....	16
7.1 DASHBOARD.....	16
7.2 BASIC SETTINGS.....	17
7.3 CHANGE WEB LOGIN PASSWORD.....	17
7.3.1 Location and time.....	18
7.3.2 Restore factory settings.....	19
7.3.3 Firmware upgrading.....	19
7.4 VIDEO&AUDIO ADJUSTMENTS.....	20
7.4.1 Video source choice and adjustments.....	20
7.4.2 Video preprocessing.....	20
7.4.3 Audio signal source.....	21
7.5 ENCODING & STEAM.....	22
7.5.1 Audio encoding parameter setting.....	22
7.5.2 Encoding and stream settings.....	23
7.5.3 Streaming media service.....	25

7.6 LOCAL RECORDING.....	31
7.7 NETWORK STORAGE (NAS)	35
7.8 TEXT/ IMAGE/TIME OVERLAY.....	36
7.8.1 <i>Overlay Image Management</i>	36
7.8.2 <i>Overlay function</i>	37
7.9 SERVICE CONFIGURATION.....	39
7.9.1 <i>Web Service Configuration</i>	39
7.9.2 <i>Onvif Service Configuration</i>	39
7.9.3 <i>Telnet Service Configuration</i>	39
7.10 SERIAL PORTS AND PTZ.....	40
7.10.1 <i>Serial Ports</i>	40
7.10.2 <i>PTZ Setting</i>	40
7.10.3 <i>Control Panel</i>	41
7.11 QUICK RESET AND REBOOT.....	41
7.11.1 <i>Quick Reset</i>	41
7.11.2 <i>Reboot</i>	41
7.12 LOGS AND DEBUG.....	41
7.13 PRESET CONFIGURATION.....	42

1 Product introduction

E series NDI video encoder is a professional device designed for NDI video production field. It compresses and encodes SDI or HDMI video source into NDI stream, transmit video via wired for any compatible systems, device and software on your network.

1.1 Advantages

- **High bandwidth adaptability, makes it possible to transmit high- definition, low-latency, non-padding image under low bit network.**

With branded chips solution together with video dynamic noise reduction and image enhancement technology, it can realize good encoding image under low bit transmission. Good video image can be achieved at 1Mbps@720p, 1.5Mbps@1080p network.

Advanced video buffering technology and FEC technology ensures video encoding low delay and stable and smooth transmission.

Adjustable bit rate from 64kbit/s~40Mbit/s.

- **Authorized by NewTek, compatible with other NDI® hardware and software products**

Available as sources for other NDI compatible systems and software, no cables everywhere anymore.

Ultra low-latency, mutual identification and communication of multiple data streams.

Smart connection, discovered and connected by other NDI devices automatically

- **Powerful encoding function, dual stream output, customized graphic overlay, voice intercom, local recording**

Wide adjustable code rate (64kbit/s to 40Mbit/s).

Dual stream output, the main code rate up to 1080p60Hz, and the sub-stream supports 720p60Hz video encoding.

Capable with customized text and image overlay function, which can be at any position on the screen.

With SD/TF card slot, it supports local recording, and supports NAS network storage.

1.2 Parameters

Model No.	E1-NDI.E2-NDI
Input	SDI (E1-NDI) .HDMI (E2-NDI)
Network Support	RJ-45 Ethernet
Media transmission protocols	NDI-HX/RTMP/TS over UDP/HLS/SRT
Video resolution	Up to 1080P60Hz: 1080p23.98/24/25/29.97/30; 1080p50/59.94/60; 1080i50/59.94/60; 720p23.98/24/25/29.97/30; 720p50/59.94/60
Video encoding	H.264/ AVC High/ Main/ Baseline profile (up to Level 5.3) ; Motion-JPEG ; NDI HX
Audio encoding	AAC/G.711
Latency	End-to-end by cable is about 150 ms
Image and text overlay	Custom text, image overlay function, can be superimposed to any position on the screen
Recording	Micro SD/TF card , local recording,NAS network storage
Management	Web/Android APP
Power supply/Consumption	DC 12V 1A / 4W
Size/ Weight	125*89*28mm/380g
Working temperature	-20°C~60°C

2 Operation guidance

- Installation and connection of the device

Connect the power and video input source correctly, power on the device.

- Network Connection and Configuration

The simplest way is that the encoder accesses the network via Ethernet, and the device automatically gets an IP address from the network. Without any settings for the device, the encoder can be automatically found and pulled by other NDI devices in the network.

If you want to set up the network manually, you can use the device failsafe IP address (192.168.1.168) to login the WEB page for setting up(default username and password is :admin/admin).

- NDI Pulling stream

NDI has the function of automatic discovery. After the encoder is normally connected to the network, other NDI-supporting tools (such as Newtek studio monitor, OBS, vMix) can be used to automatically discover the encoder and pull its NDI video stream directly.

- Other streaming service

If necessary, you can also configure the device to push video streams such as RTMP, RTMPS,UDP, HLS, SRT,etc..

3 Packing list and interface description

3.1 Packing list

Please check the parts and accessories you received are exactly

Name	Unit	Quantity	Note
NDI® Encoder	SET	1	E1-NDI:SDI Input; E2-NDI: HDMI Input
DC12V/1A power adaptor	PCS	1	
USB Tally	PCS	1	
Quick start guide	PCS	1	
Certificate/Warranty card	PCS	1	

3.2 Interface description



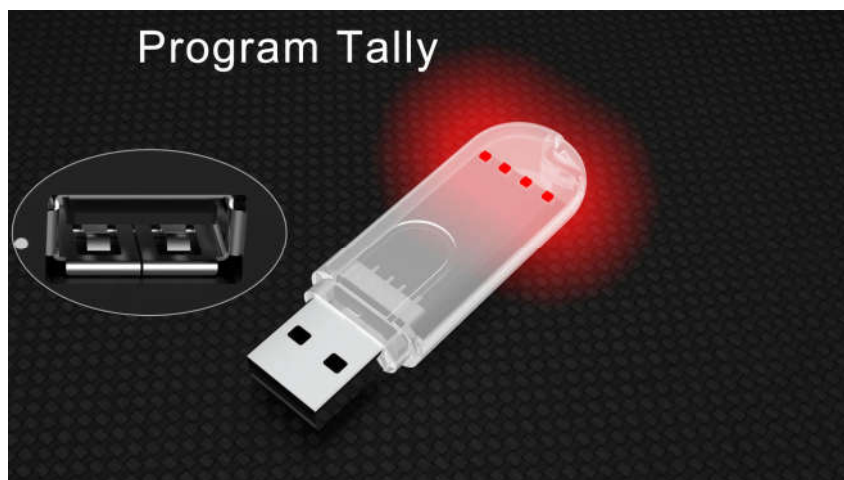
- 1.Power 2.Mini USB 3.Audio out 4.Audio in
- 5.SDI IN/ HDMI LOOP 6.SDI LOOP/HDMI IN 7.Ethernet 8.Indicator
- 9.USB extend 10.TF card 11.Power Switch 12.Reset

3.3 Signal indicator

Name	color	Status	Description
Power	Red	Always on	Power supply is connected
		Off	Power supply is not connected
Signal	Green	Always on	SDI/HDMI signal is connected
		Flashing	Restore device to factory settings
		Off	SDI/HDMI signal is not connected
Run	Green	Always on	Device is starting
		Flashing	Working
		Off	Working abnormal/not started

This unit supports Tally indication from any NDI switching device by connecting the external Tally device that comes in the package with the USB port of the encoder.

When the NDI source is output to NDI receivers such as VMIX, TriCaster, etc. and when switch to Program or Preview, the encoder receives the notification and changes the color on the "Tally" device, as shown in the figure below:



4 Installation and connection

4.1 Power connection

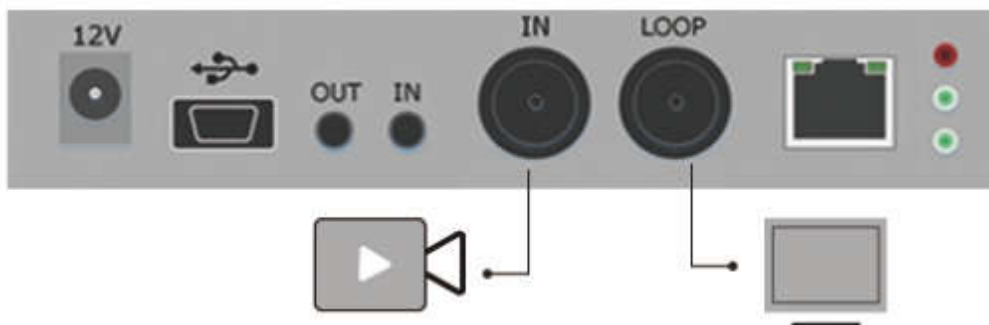
Using the power adapter (DC 12v) to connect to the power connector of the device. After connected, turn on the power switch (Interface No.12) on the device. After the device is powered on, it starts working



⚠️ Note: Please use the standard power adapter provided. Using other unqualified power supplies may damage the device.

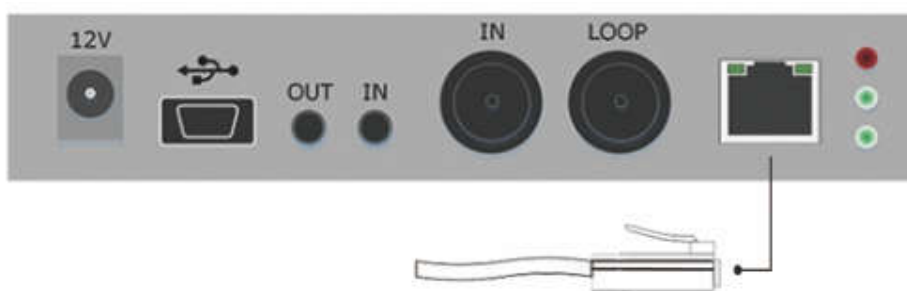
4.2 Video signal connection

Connect the SDI/HDMI signal from a source (such as a camera) to the input port of the device through a cable, make sure the connection is tightened.



4.3 Network connection

Connect the network cable to the Ethernet port of the device, and connect the other end to the network switch or directly to the network port of the computer.




5 Login and network configuration

5.1 Login to the device through Ethernet

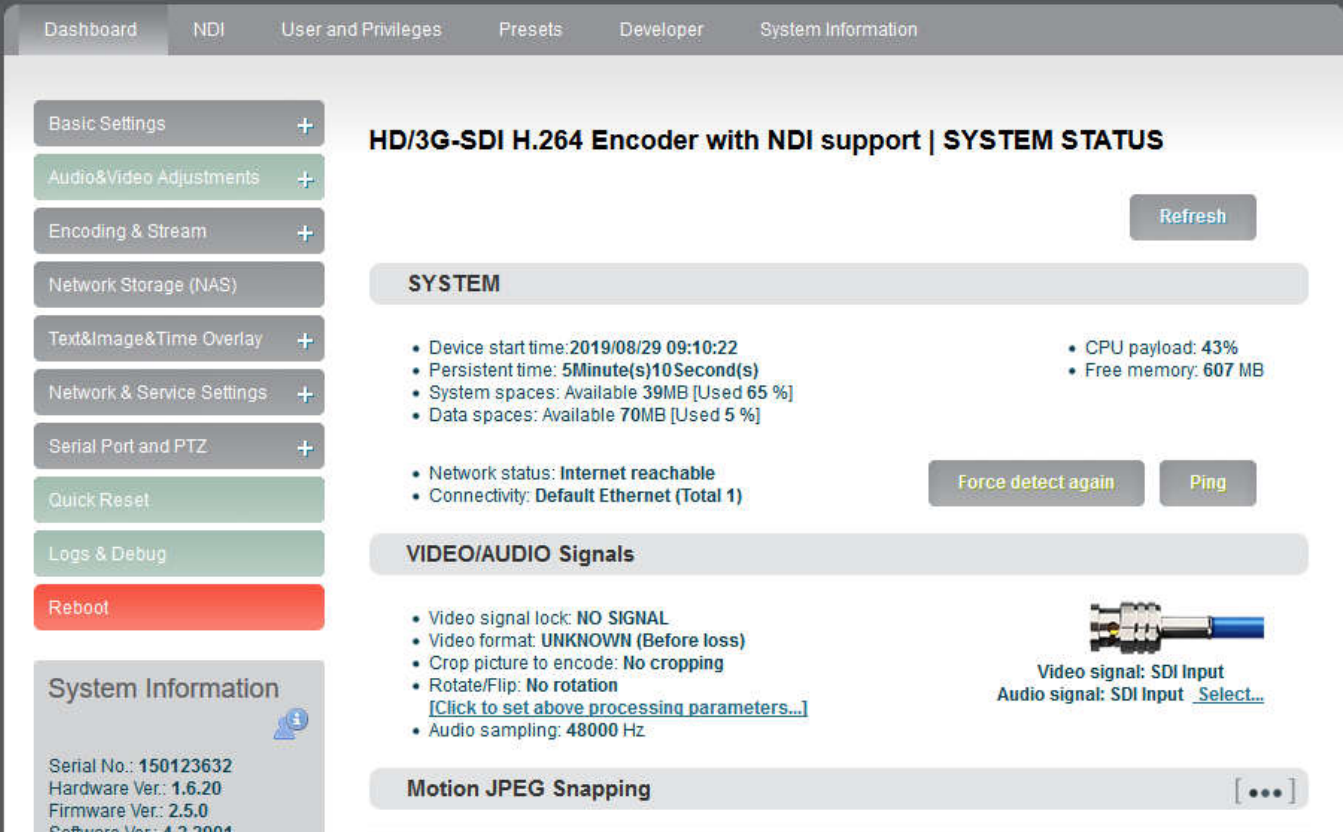
First connect the Ethernet port of the NDI encoder and the computer to the same switch, or connect the encoder directly to the computer network port. Then configure the encoder and computer to the same network segment so that the computer can access to the web page of the encoder.

The default management IP address of the encoder is 192.168.1.168 (This is the failsafe address of the device. Generally, do not modify this IP address.). If the IP address of the computer is not in the network segment of 192.168.1.*, please set the IP address of the computer network port to 192.168.1.*.

Open the WEB browser, directly input the encoder's IP address (default is 192.168.1.168) or the URL <http://192.168.1.168> and press Enter to open the login interface. After opening the page, an authentication dialog will pop up, please fill in the username and password, the default username is admin, the default password is admin, and then click "Login".

 **Note:** Due to the browser compatibility issues, it may cause the web page display abnormal, it is recommended to use Chrome and Firefox.

After login, the encoding and function parameters can be set on the encoder management web page. The page is shown as below:



The screenshot displays the web management interface for an HD/3G-SDI H.264 Encoder with NDI support. The interface includes a navigation menu on the left with options like Basic Settings, Audio&Video Adjustments, Encoding & Stream, Network Storage (NAS), Text&Image&Time Overlay, Network & Service Settings, Serial Port and PTZ, Quick Reset, Logs & Debug, and Reboot. The main content area is titled "HD/3G-SDI H.264 Encoder with NDI support | SYSTEM STATUS" and features a "Refresh" button. It is divided into several sections:

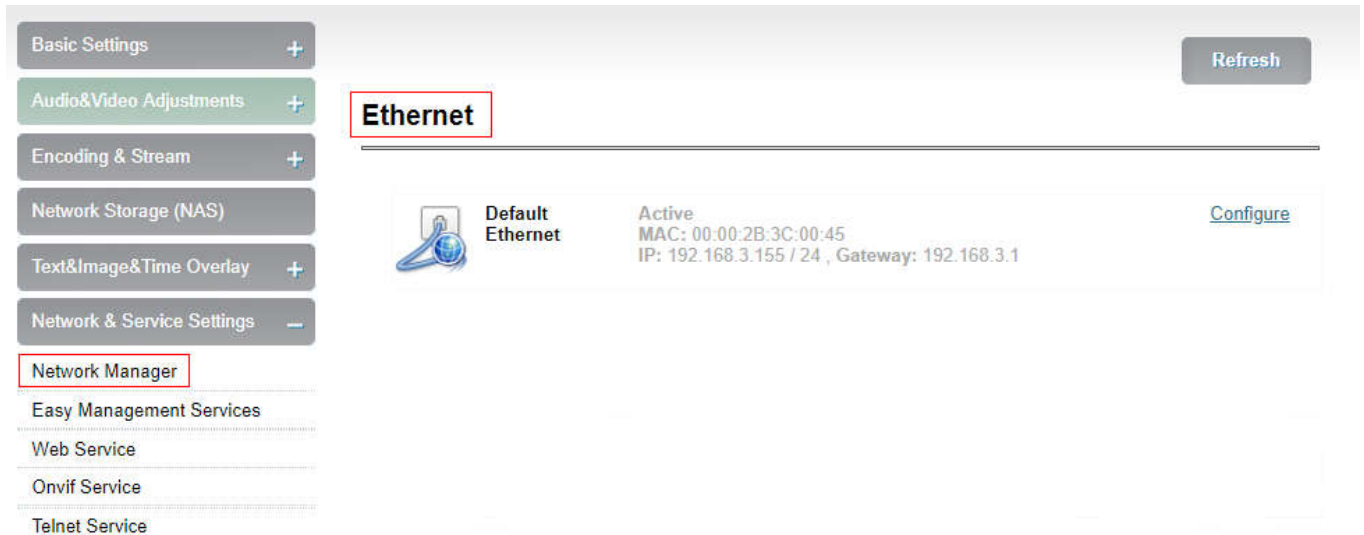
- SYSTEM:**
 - Device start time: 2019/08/29 09:10:22
 - Persistent time: 5Minute(s)10Second(s)
 - System spaces: Available 39MB [Used 65 %]
 - Data spaces: Available 70MB [Used 5 %]
 - CPU payload: 43%
 - Free memory: 607 MB
 - Network status: Internet reachable
 - Connectivity: Default Ethernet (Total 1)
- VIDEO/AUDIO Signals:**
 - Video signal lock: NO SIGNAL
 - Video format: UNKNOWN (Before loss)
 - Crop picture to encode: No cropping
 - Rotate/Flip: No rotation
 - [Click to set above processing parameters...]
 - Audio sampling: 48000 Hz
- Motion JPEG Snapping:** [...]

Additional information includes a "Force detect again" button, a "Ping" button, and a video signal icon with labels: "Video signal: SDI Input" and "Audio signal: SDI Input Select...". The bottom left corner shows system information: Serial No.: 150123632, Hardware Ver.: 1.6.20, Firmware Ver.: 2.5.0, and Software Ver.: 4.2.2001.

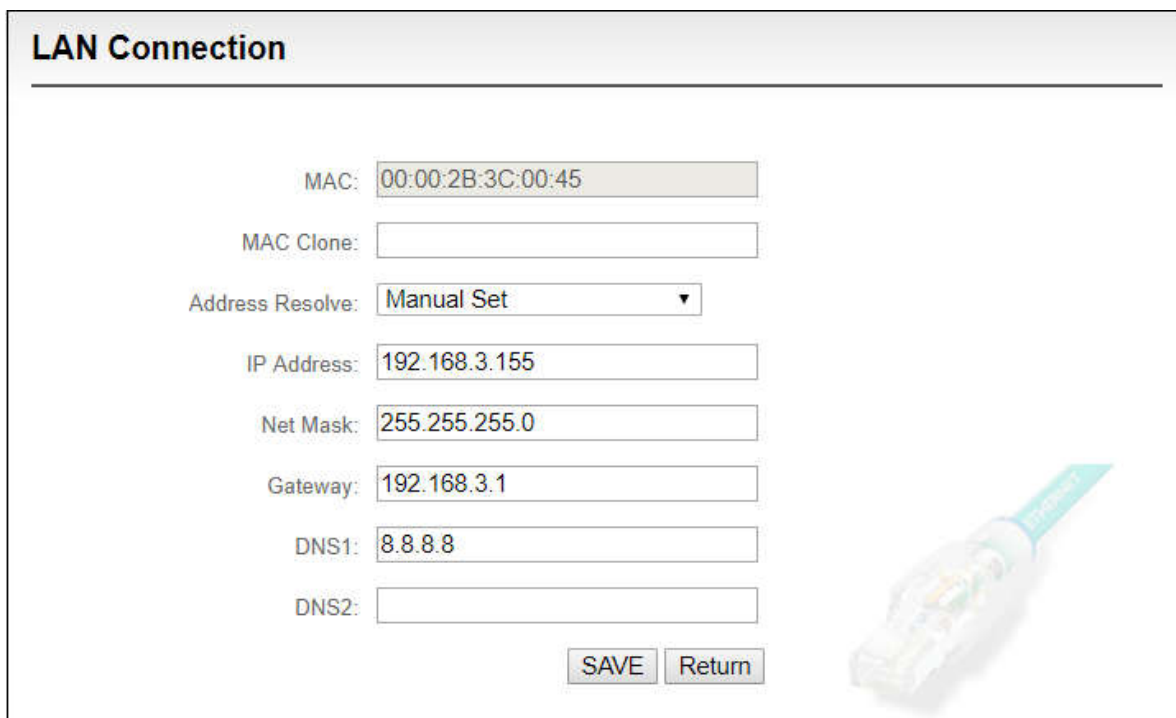
5.2 Network configuration

The Ethernet port can be configured with an IP address and default setting is DHCP . It will automatically get a complete IP address, Netmask, Gateway and DNS according to this LAN.

Click "Network & Service Settings", click "Network Manager" to enter the following interface, you can see the IP address with Ethernet.



In addition to the way of DHCP , the encoder also supports manual IP assignment. To change the IP of the wired network, click “Configure” button in the Ethernet to enter the interface for configuring the IP. There are two ways to get the address, one is DHCP, and the other is to manual. To use DHCP to automatically obtain IP, you must first ensure that the router or switch has enabled the DHCP service. This method is simple and convenient, but the IP obtained by DHCP changes continuously, and you cannot directly know what IP address the encoder gets. To use manual, you need to enter a fixed IP to the encoder, and this IP address is fixed as long as the encoder does not restore the factory settings, this method is more stable. Therefore, the two methods have their own advantages, and can be selected accordingly.



After Ethernet is configured correctly, you can see that the connection status is “Internet reachable” and the Internet connection is the default Ethernet port on the Dashboard.

⚠️ Note: *Because the device writes the configuration file to the system regularly for saving, the device can not power off immediately after the IP address is manually configured or modified, otherwise the IP address may be lost. If you want the IP address configuration to be saved immediately, you can restart the device once on the WEB page.*

5.3 Convenient management functions

The "Local Link" is configured with a dedicated IP address on Ethernet (This is the failsafe IP address of the Ethernet port. Generally, do not modify this IP address.) . In this way, even if you forget the IP settings of the Ethernet, or if the IP cannot be learned because DHCP gets the address, you can still connect and access the device through the configured private IP address.

Easy Management Service

About Easy Management

The 'Easy Management' service provide a easy way for users to manage/use this device. Two important functions is served: 1st, 'Local Link' on ethernet; 2nd, connect your Android or iOS phone/pad to this device.

'Local Link' function give a way to set a special static IP address on Ethernet port. Thus, even you forget the IP or unknow the dynamic IP, you can also access this device by that 'special static IP'.

This device enable you connect Android or iOS phone/pad to it, that you can manage it and watch live video by an App, and share your phone's 4G network.

Local Link

Enable Local Link:

Special IP Address:

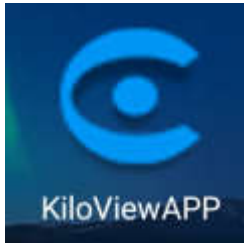
Netmask:

"Local Link" is to bind the encoder to a separate IP address, this IP address does not affect the use of other network cards, in special cases, it can play a role to manage encoder, this address can be manually changed, the default address is 192.168.1.168.

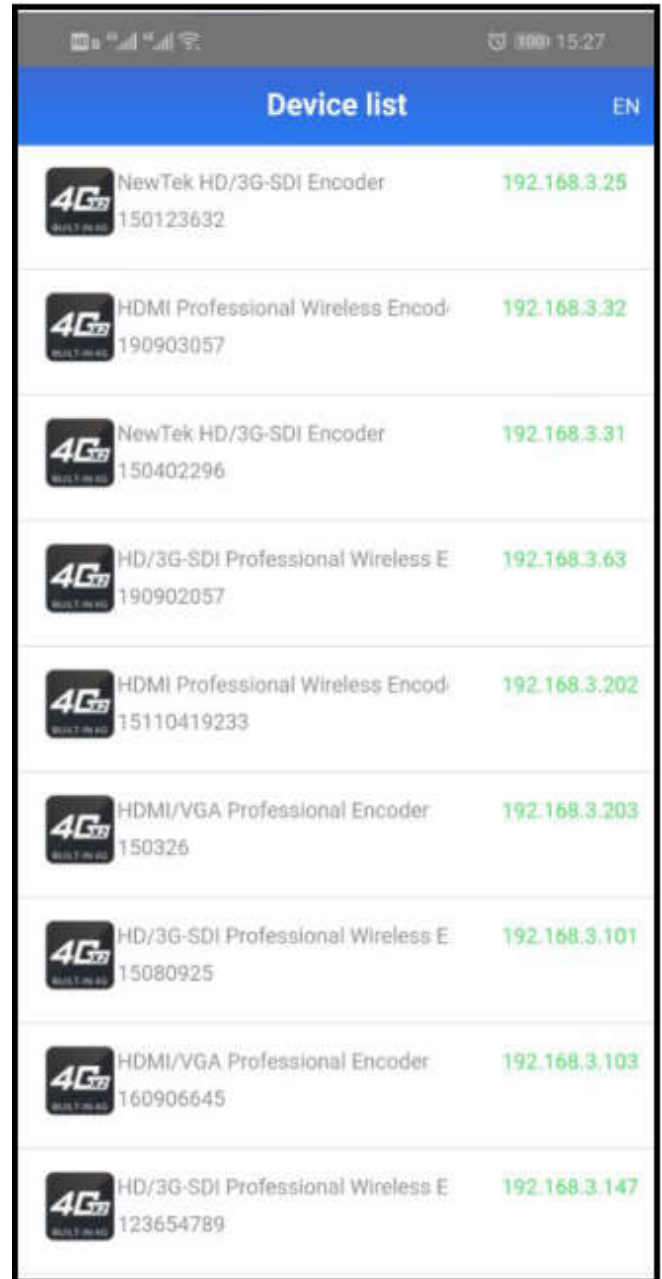
⚠️ Note: *When accessing the device through a convenient managed IP address, your computer must have an IP address on the same network segment.*










5.4 Android APP

- Please download the Android APP from Kiloview website, then install it.
(<http://www.kiloview.com/companyfile/shi-pin-bian-ma-qj-Android-APP-45.html>)

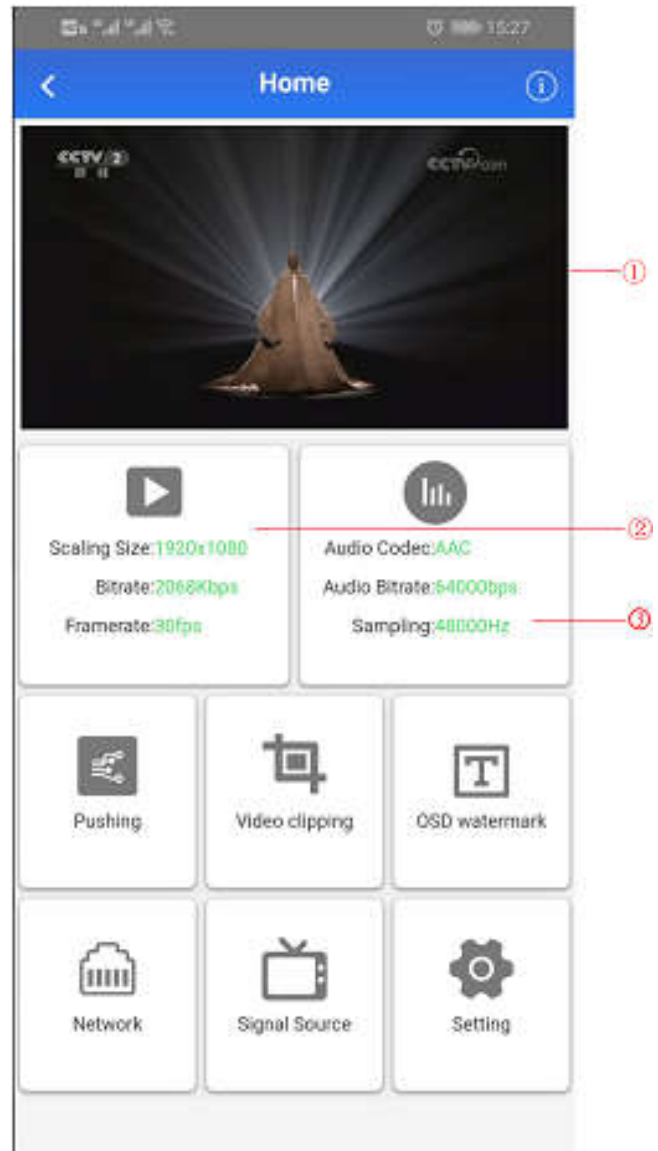



- Connect the phone to the same network segment of the WIFI that the device connects. (You can share the hotspots while using P and G series encoder) .Open the APP and search the connected devices under the same network segment automatically in the device list.
- The device information shown in the list includes device interface information, device serial number, device IP address, etc.
- Click the device from the device list to enter into management page.

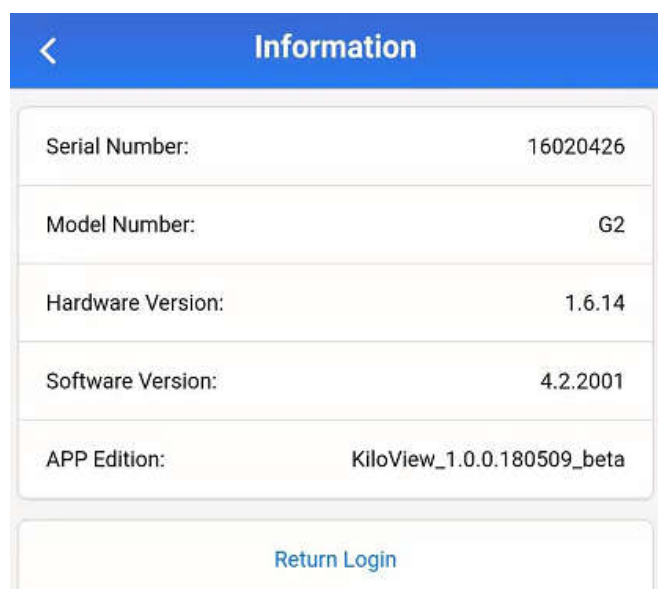


Device list		EN
	NewTek HD/3G-SDI Encoder 150123632	192.168.3.25
	HDMI Professional Wireless Encod- 190903057	192.168.3.32
	NewTek HD/3G-SDI Encoder 150402296	192.168.3.31
	HD/3G-SDI Professional Wireless E 190902057	192.168.3.63
	HDMI Professional Wireless Encod- 15110419233	192.168.3.202
	HDMI/VGA Professional Encoder 150326	192.168.3.203
	HD/3G-SDI Professional Wireless E 15080925	192.168.3.101
	HDMI/VGA Professional Encoder 160906645	192.168.3.103
	HD/3G-SDI Professional Wireless E 123654789	192.168.3.147

- On the configuration page, it shows video source image on the area of ① to monitor whether video source is normal. This image stream is refreshed in three seconds.
- Click ② for main stream configuration .
- Click ③ for audio encoding configuration .
- Click “Pushing” for stream service configuration .
- Click “Video Clipping” for video clipping function.
- Click “OSD watermark” for image overlay function configuration. APP only supports text and time overlay configuration, image overlay is configured on Web page .
- Click “Network” for network configuration .
- Click “Signal Source” for audio and video source choice page .
- “Setting” are used for quick reset, device reboot, restoring factory settings and device name modifications.



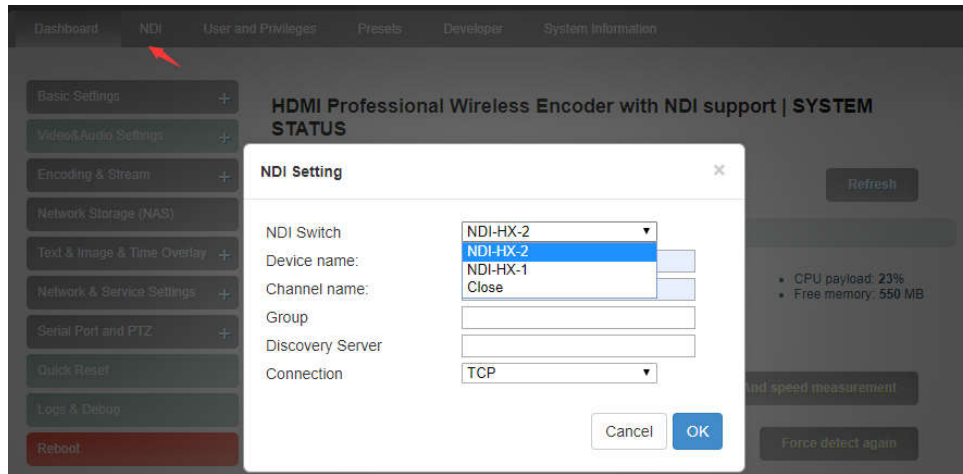
Click  and enter into device information page.



6 NDI discover and configuration

E series NDI video encoder is a professional video encoding device for NDI video production. It can compress SDI or HDMI video source coding into NDI protocol stream and transmit video through wired network for any compatible system, device or software in the network.

It features NDI|HX 1 and NDI|HX 2, and support for switched on or off in settings.



⚠ Notice: When NDI encoder selects NDI|HX2 output, the encoder can support RTSP protocol transmission at the same time.

6.1 NDI|HX Driver Installation

At present, the encoder uses a compressed NewTek NDI|HX technology. Before using other tools to connect, you need to download and install the NDI|HX driver from the NEWTEK website (<https://www.newtek.com/ndi/tools>), NDI Tools contains the following:

<h2 style="text-align: center;">NDI® Tools for Windows</h2>	<h2 style="text-align: center;">NDI® Tools for Mac</h2>
<ul style="list-style-type: none"> NDI Studio Monitor NDI Scan Converter NDI Virtual Input NDI VLC Plugin NDI for Adobe Creative Cloud NDI Import I/O for Adobe CC NDI Access Manager NDI Test Patterns NDI HX Driver <div style="text-align: center; margin-top: 20px;"> <div style="background-color: #333; color: white; padding: 5px 20px; display: inline-block;">DOWNLOAD</div> </div>	<ul style="list-style-type: none"> NDI Video Monitor NDI Scan Converter NDI Virtual Input NDI for Adobe Creative Cloud NDI Import I/O for Adobe CC Access Manager NDI HX Driver* <small>*Separate installer provided</small> <div style="text-align: center; margin-top: 20px;"> <div style="background-color: #333; color: white; padding: 5px 20px; display: inline-block;">DOWNLOAD</div> </div>


6.2 NDI discover and connection

⚠️ Note: *NDI discover is realized via multicast, so it is required to put NDI encoder and other NDI devices in the same subnet, and configured with the IP address of the same subnet and can communicate with each other (can be obtained automatically). Otherwise, the NDI encoder cannot be automatically discovered.*

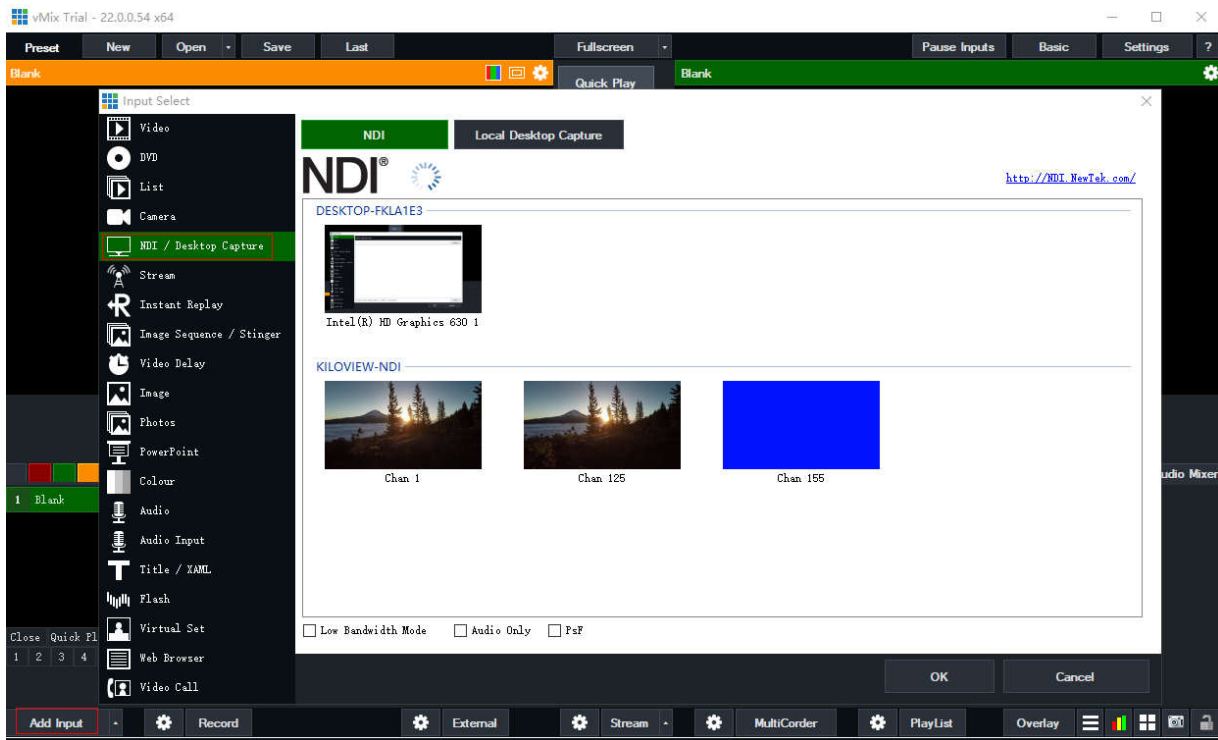
When the device configured with network and NDI|HX driver installed on the PC side, other NDI-enabled tools of the same subnet can discover the encoder automatically. Currently the tools that support the NDI protocol are widely. The following is an example of how to automatically discover and pull NDI video streams by using NewTek studio monitor and VMIX.

- Open NewTek studio monitor software, click the icon in the upper left corner to display the list of device names that have been discovered. The device list will be displayed according to different channel names. Select the device you want to connect, and then you can pull the current video stream of the encoder.



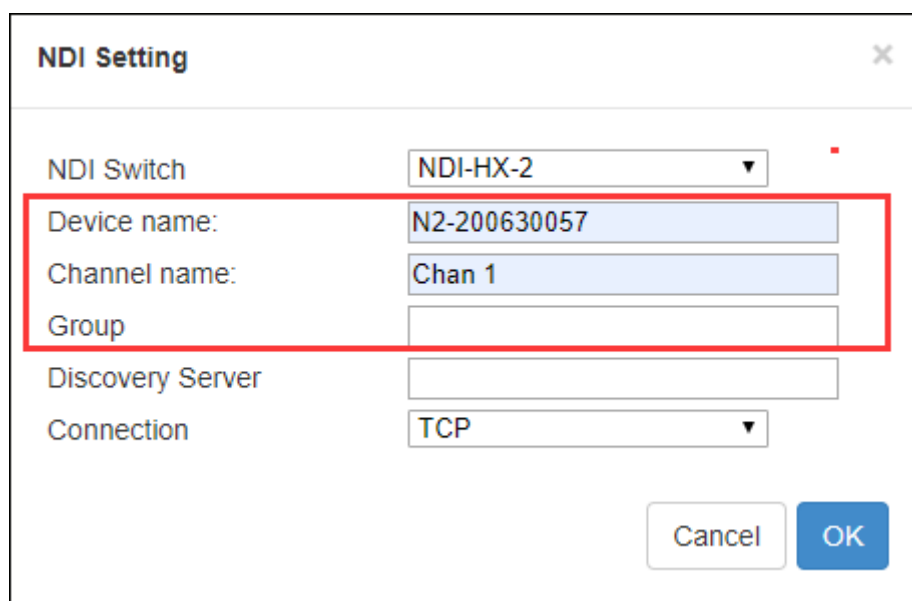
⚠️ Note: *After opening the selected video of the encoder by Studio Monitor, click  in the lower right corner of the player to open the Web page of the encoder directly, which is convenient for the management of the encoder.*

- Open vMIX software, click “add input” of the left corner, select “more”, which shows it can add various sources. Click “NDI/desktop capture”, it shows NDI devices list. According to device names and channel names, you could select the device you want to add, then click “OK”, the video source will be added into vMIX play source list.



6.3 Modify NDI device name and channel name

When there are multiple NDI encoders in the same network, and the default device and channel names are the same, it is required to modify device name and channel name to identify different devices. At the same time, you can set more NDI groups, and the default is “public group”. If set different groups, the receiving devices must be in the same group to discover NDI flows.



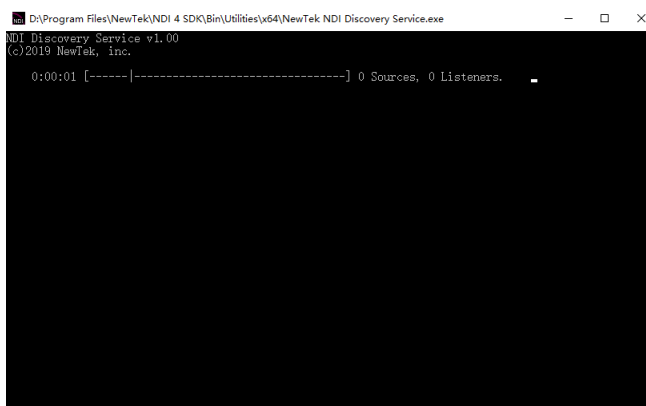
6.4 Modifying NDI Bit Rate

On the dashboard, click SET at H.264 Main Stream to set the bit rate, which is also the bit rate of NDI stream.

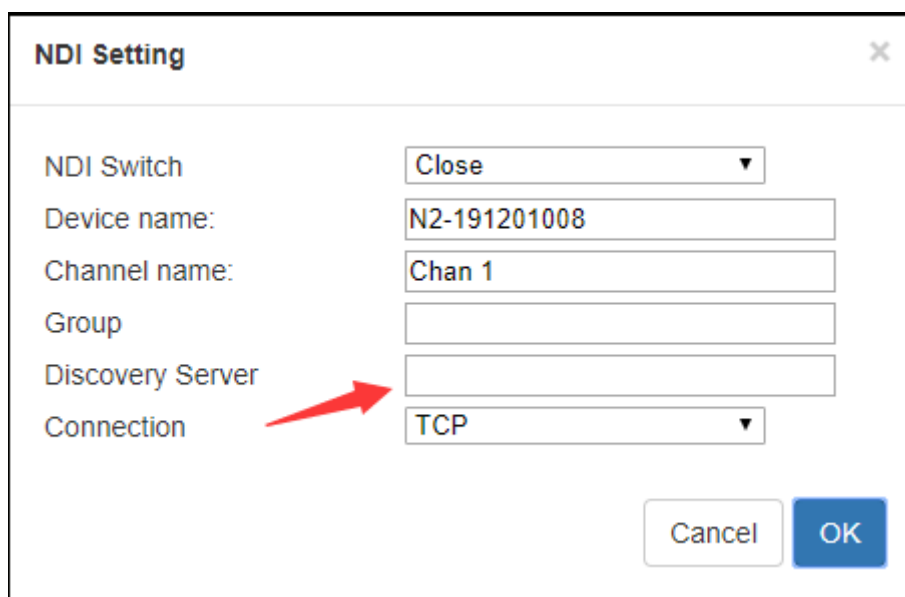
6.5 Discovery service

NDI discovery server can replace NDI auto discovery with server. All NDI sources are registered with server in a centralized way, and the receiving end obtains NDI source from the server. Through this, the device can also send the output video stream to the receiving end of the cross-network segment.

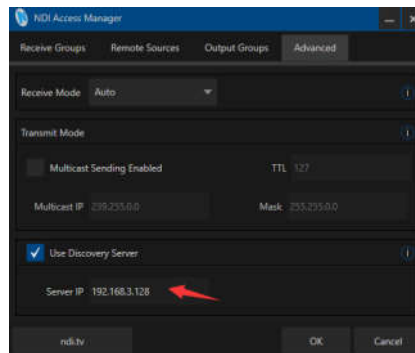
First, download and install the NDI SDK on a Windows computer at the receiving end. After installation, run bin/ utilities/x64/NDI discovery Service.exe.



NDI encoder configures the receiving IP address in the discovery server, and NDI will be registered with the server. It is recommended that the receiving address should be configured as a static IP address to prevent the loss of NDI connection due to IP reallocation.



Install NDI tools on the receiving end and open “NDI access manager”. Click to enter the "advanced", cancel the "multicast sending enabled" function, select "Use discovery server", and set the "Server IP" address to the IP address of your computer that enables the discovery server function. After configured, the receiving end can discover the NDI stream registered with the server.

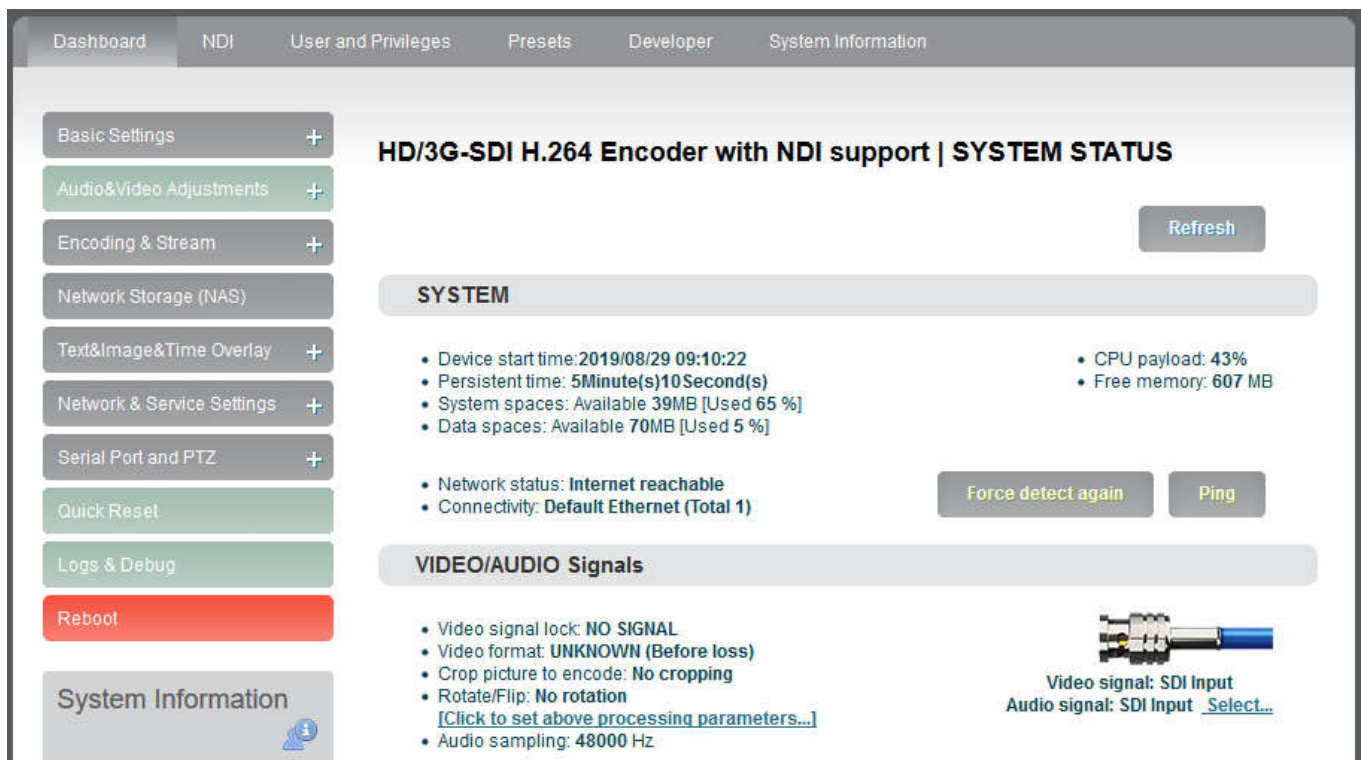


⚠ Note: after this function is enabled, the mDNS auto discovery function is invalid. The stream of the decoder can only be sent to the specified server, and the receiver end must register with the same discovery server to pull the NDI stream.

7 Parameters configuration

7.1 Dashboard

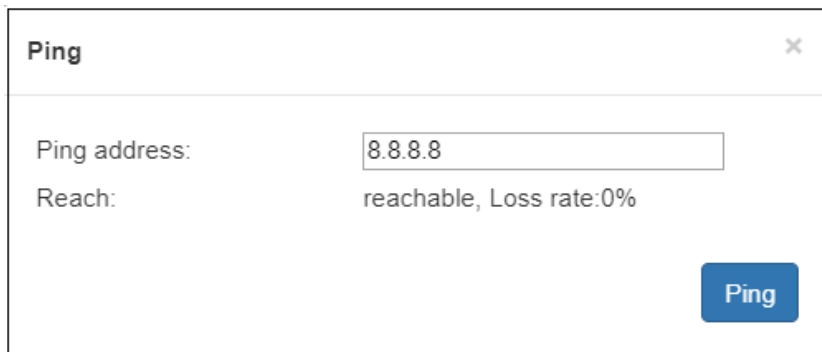
“Dashboard” is an overview of the current running status of the device and the status of audio and video streams. Users can click the “Refresh” button to refresh in real time, which can greatly help the encoder setting and troubleshooting.



- System

Click “Basic Setting”, users can know information including “device start time”, “persistent time”, “system spaces”, “data spaces”, “network status” and “connectivity” of the device, and go for “Ping” testing. If users need to push to Internet platforms, network status should be “Internet reachable”, or it cannot push streams.

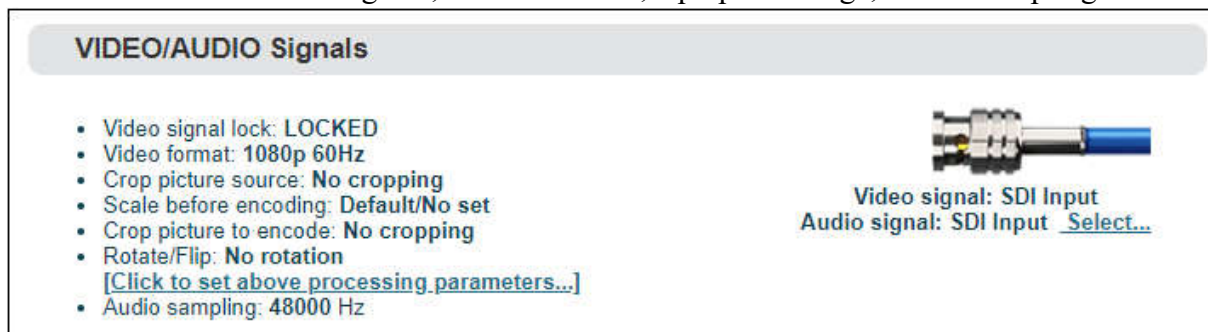
The “Ping” provides a simple function to test whether the network is reachable. Open the “Ping” button, enter the test address, click “Ping”, wait for 3s, and “Connectivity” is displayed as “reachable, packet loss rate 0%” means the network is good and streams can be pushed to the Internet normally.



⚠ Note: *If Ping public IP address is reachable, but Ping domain name is unreachable. Generally, it is because the DNS server configuration is incorrect.*

- Video/Audio signals

It can show “Video/audio signal”, “video format”, “preprocessing”, “audio sampling” as below:



If “video signal lock” displayed as “no signal (display blue screen)”, it means the video input source is not detected by the device. Please check if the input cable is plugged in. If “Audio sampling” is displayed as “0Hz”, the audio signal is not collected on the device. Please check if the audio of the input source is normal.

7.2 Basic settings

Users can go for some basic functions settings here.

7.3 Change WEB login password

Click “Change Password”, an option box will pop up, users can modify the WEB login password, the default password is admin.



7.3.1 Location and time

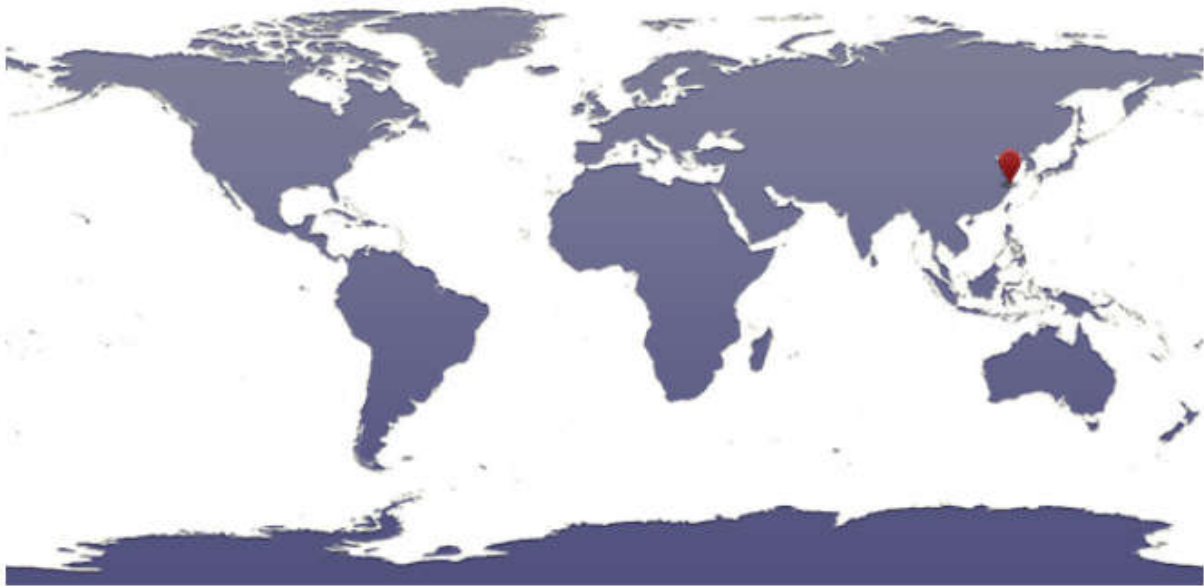
Click “location and time”, then users can modify system time of the encoder, or just select “Synchronize from this PC”.

Location & Time Setting

i Current time of device: 2019-07-03 19:31:18
Universal Coordinated Time in Device: 2019-07-03 11:31:18

Location/Time zone: Asia/Shanghai
NTP Time Synchronization Enable: yes
NTP Synchronization Status: yes

Select Your Location



Location/Time zone: Asia/Shanghai, Beijing

Country/Area: China

Date & Time Setting

Set: Synchronize From NTP Server


NTP Server: NTP Server on Internet - China

7.3.2 Restore factory settings

If users change parameters that lead encoder couldn't work (Typical situation is that encoder couldn't be visited by network after modifying network address), users could restore factory settings to default value.

Two methods for restoring factory settings:

1. Via the WEB interface, "Basic Setup > restore factory settings" function;
2. Through RESET button:

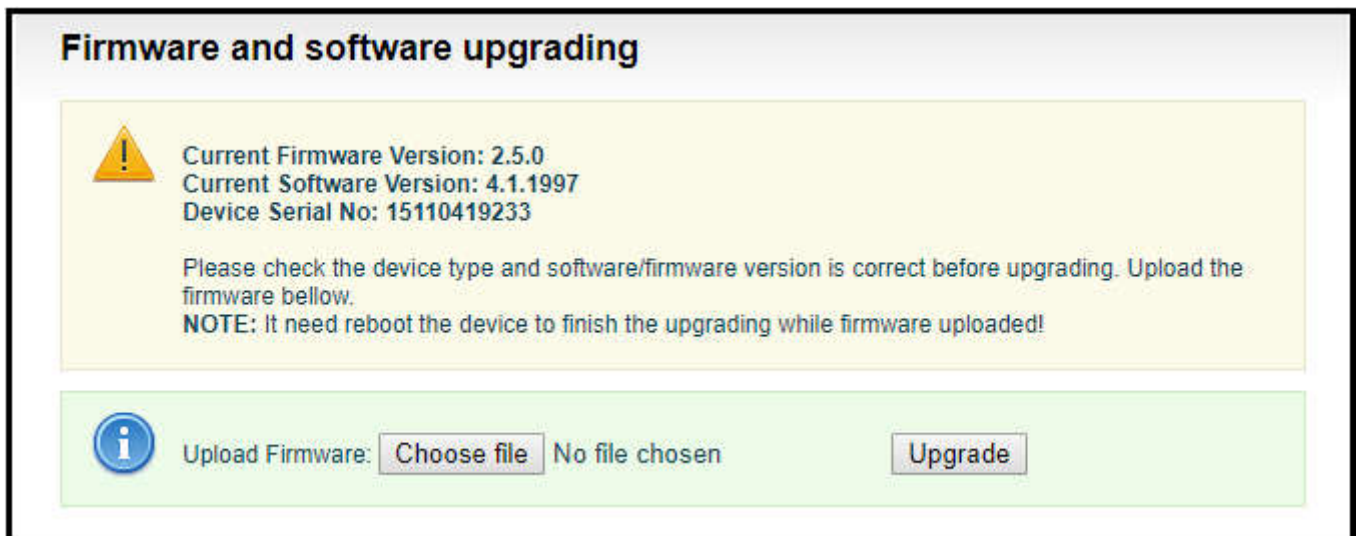
On the dashboard, there is a button of . Pressing on RESET button for 3 seconds, device will restore factory settings. Restoring factory setting will lead to the device hard restart, restarting course will last 1 minute.

Please note: after restoring factory setting, below parameters will be changed to default value:

- Login username and password will be admin;
- IP address will be restored as 192.168.1.168, subnet mask will be 255.255.255.0;
- All encoding parameters of video and audio will be restored to factory default value;
- Media transmission parameters will be restored as factory default value.

7.3.3 Firmware upgrading

The encoder supports online firmware upgrading. Through the “Basic Settings-Update Firmware” of the Web page, users can upload the firmware online. Click “Choose file” to select the upgrade file, and click “Upgrade” to upgrade the device. The upgrade process is slow, around 30s to 1 minute, please be patient.

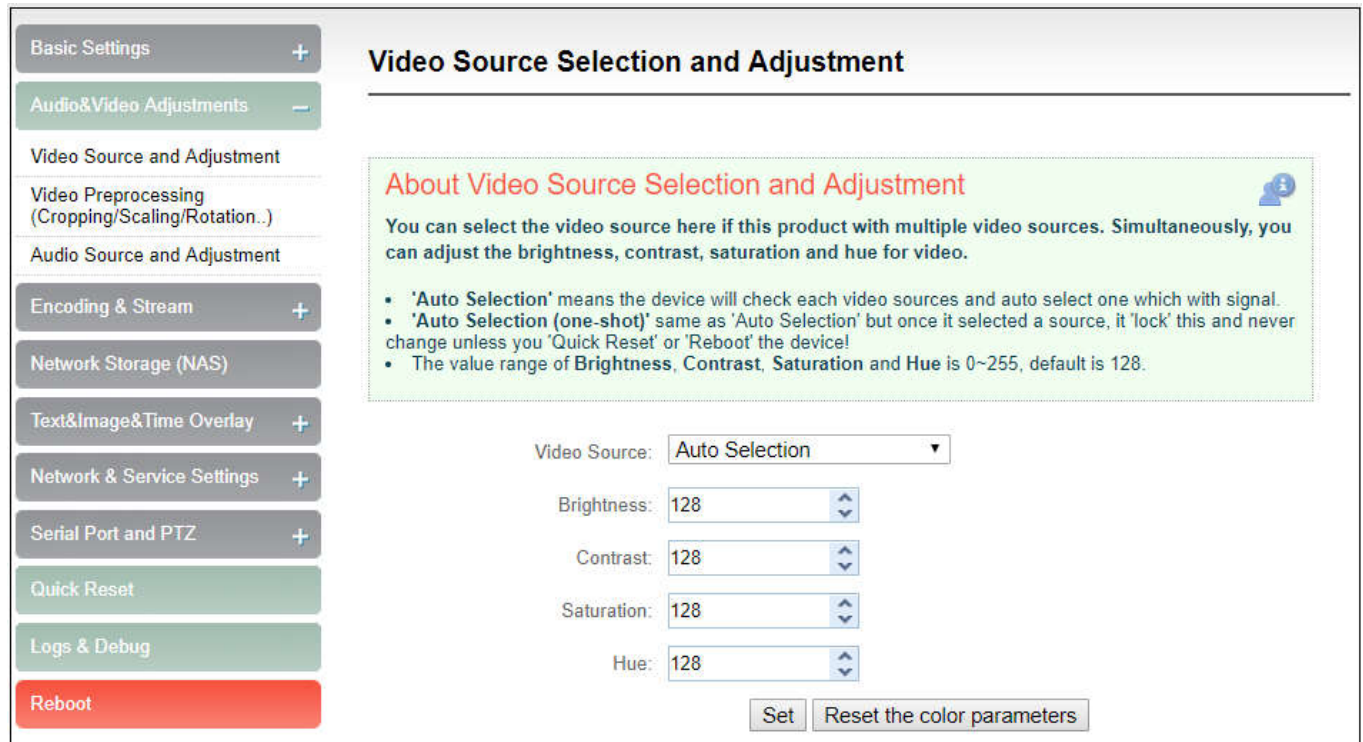


After upgrading, kindly check whether the version information of the latest firmware is consistent with the expected status through the System Status-Software Version of the Web page.

7.4 Video&Audio adjustments

7.4.1 Video source choice and adjustments

Users can choose video source, adjust brightness, contrast, saturation and hue parameters of the video here.



Video Source Selection and Adjustment

About Video Source Selection and Adjustment

You can select the video source here if this product with multiple video sources. Simultaneously, you can adjust the brightness, contrast, saturation and hue for video.

- 'Auto Selection' means the device will check each video sources and auto select one which with signal.
- 'Auto Selection (one-shot)' same as 'Auto Selection' but once it selected a source, it 'lock' this and never change unless you 'Quick Reset' or 'Reboot' the device!
- The value range of Brightness, Contrast, Saturation and Hue is 0~255, default is 128.

Video Source: Auto Selection

Brightness: 128

Contrast: 128

Saturation: 128

Hue: 128

Set Reset the color parameters

“Auto Selection” means the device will check each video sources and automatically select the one which has signal.

“Auto Selection (one-shot)” same as “Auto Selection” but once it selected a source, it 'lock' this and never change unless you 'Quick Reset' or 'Reboot' the device!

The value range of Brightness, Contrast, Saturation and Hue is 0~255, default is 128. Based on the median value, the increase/decrease value corresponds to the increase/decrease in brightness/contrast/saturation. The default value of Hue is 128, which represents phase 0; the value range is 0-255.

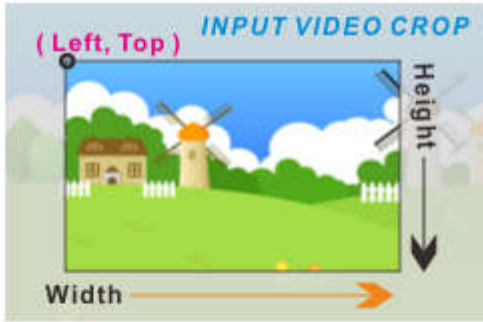
7.4.2 Video preprocessing

Before video captured and sent to encoder, we can make some necessary preprocessing:

- (1) Source picture cropping: Crop a part of the original picture for encoding.
- (2) Scaling: After step 1 cropping (or not cropping), video can be scaled up/down to certain format. (E.g. Input video is 1080p60, scaling down to 720p30 for encoding.)
- (3) Second cropping: After the step 2, you can continue cropping the size you want for encoding. (It's almost the same with step 1, but necessary in specific application.)
- (4) Rotation or flipping: It's the last step before encoding, you can rotate the video with 90/180/270 degrees, horizontal mirror or vertical flip.

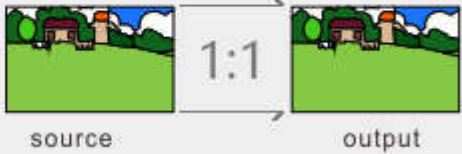
Above process is a pipeline from step 1 to step 4. You could choose to open, or prohibit it about each step.

Source Picture Cropping:




Scale To:

DEFAULT









source output

Cropping The Scaled Picture:



Rotation/Flipping:

		
Default	90 Deg.	180 Deg.
		
270 Deg.	Mirror	Flip

7.4.3 Audio signal source

Audio source “Auto selection” mode is automatically to select the embedded audio of the input video source.

- Basic Settings +
- Audio&Video Adjustments -
- Video Source and Adjustment
- Video Preprocessing (Cropping/Scaling/Rotation...)
- Audio Source and Adjustment
- Encoding & Stream +
- Network Storage (NAS)
- Text&Image&Time Overlay +
- Network & Service Settings +
- Serial Port and PTZ +

Audio Source Selection and Adjustment

About Audio Source Selection and Adjustment

You can select the audio source port here. And you can adjust the analog audio gain here too.

- Audio source 'Auto Selection' means the audio source port is auto selected decided by which video source current is. If the video source is 'HDMI' or 'SDI' which has embedded audio, the audio source is embedded digital audio; otherwise, the audio source is Line in.
- 'Audio Gain' is set by 'db'. 0db is the original audio gain, +/- 3db means increment/decrement 50% gain and +/- 6db means increment/decrement 100% gain.

Audio Source: Auto Selection

Line In Gain: 0 db (Default)

Note: E series products are without Analog Line in and doesn't support adjust analog input gain.

7.5 Encoding & Steam

7.5.1 Audio encoding parameter setting

Encoders can set audio encoding parameters. Click “Encoding &stream”, pull downward “Audio Encoding Engine”, then entering into audio parameters setting. Audio encoding channel is forced to enable. Audio encoding modes include AAC and G.711, optional. Audio sampling is chosen according to actual situation. Channels consist of “Stereo” and “Mono”. Encoding bitrate is adjustable between 16K-256K, default is 64Kbps. One more detail: if encoder using TS-UDP protocol or needs using recording, then it needs to choose “With ADTS header” under AAC format.

- Basic Settings +
- Audio&Video Adjustments +
- Encoding & Stream -
- Audio Encoding Engine
- Encoding and Stream Settings
- SIP settings
- Network Storage (NAS)
- Text&Image&Time Overlay +
- Network & Service Settings +
- Serial Port and PTZ +
- Quick Reset
- Logs & Debug
- Reboot

Audio Encoding Engine

NOTE: Please do **"Quick Reset"** to take affect if you changed the 'Resample policy' or 'Sampling' parameter.

Audio Encoding Channel 1

Resample policy: Fastest/Low quality
If the 'Sampling' not be 48KHz, audio 'resample' is required. This parameter decides the resampling quality and CPU consumption. It may consume more CPU if you select 'High quality' option.

Encoding: AAC

Sampling: 48 KHz

Channels: Stereo

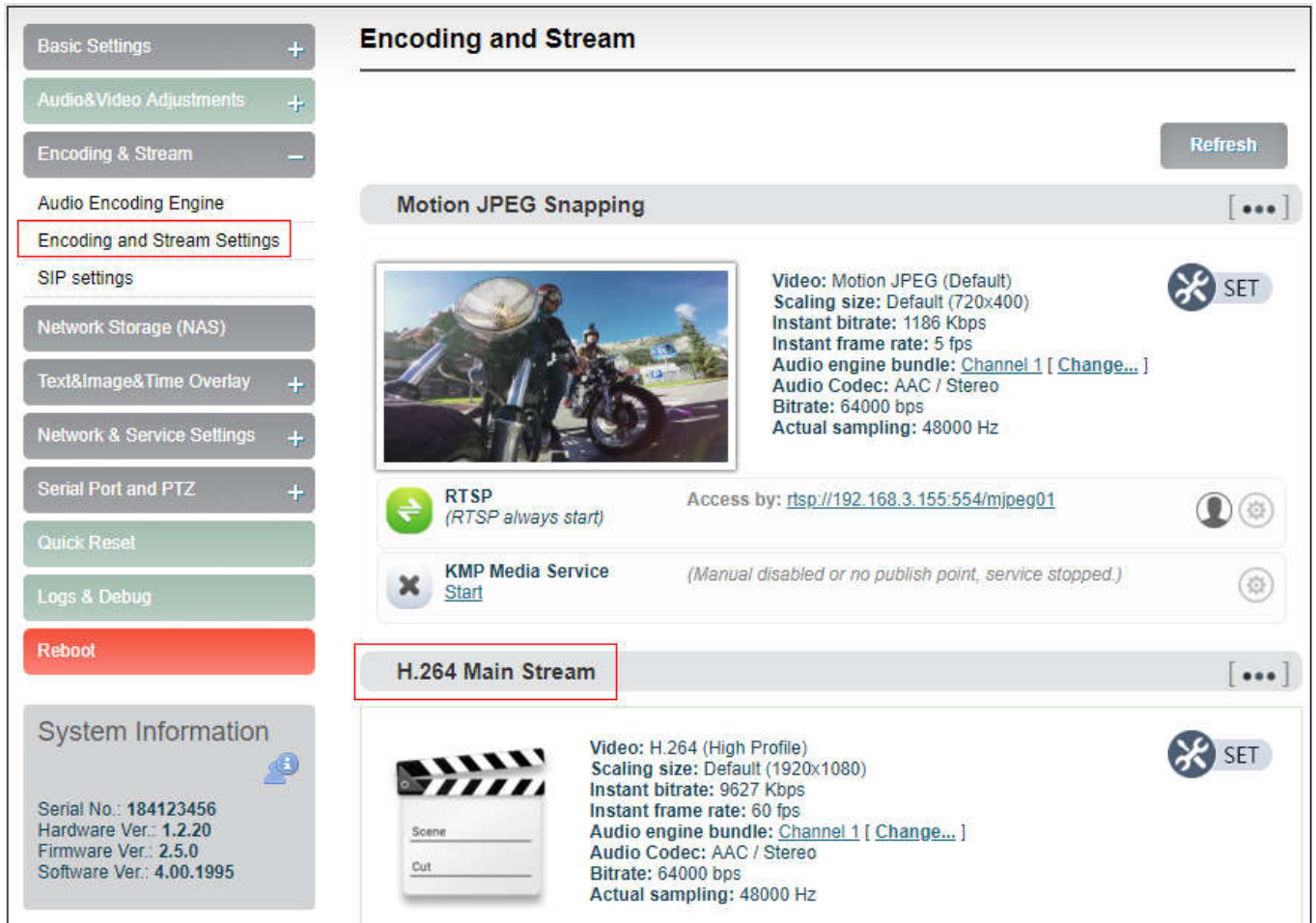
Bitrate: 64 Kbps

Note: Please do **"Quick Reset"** to take affect if you changed the 'Resample policy' or 'Sampling' parameter.

7.5.2 Encoding and stream settings

Video encoding parameters are adjustable. Click “Encoding &Stream”, pull downward “Encoding and stream settings” to enter below interface. We generally set parameters of “H.264 main stream”, click “Setting”.

⚠️ Note: It is H.264 Main stream, the second setting, not Motion JPEG setting.



⚠️ Note: For NDI, the sub-stream of the encoder must always be in the running state, otherwise it may cause the NDI stream to have no audio.

Click SET, entering into below interface for main streaming encoding parameters setting, as follows:

Main Stream Encoder parameters

Scaling:

Color:

H.264 profile:

Bitrate control:

Bitrate: bps

Bitrate auto adjust:

Framerate:

Dynamic framerate:

GOP Size:

Customized GOP size:

Reference frames:
(Using multiple reference frames should better encoding quality but this may be not compatible to some decoders)

“Scaling” has 9 options for choice. Default setting is “Default size”, that is, the video size after encoding is the same as the input video size.

“Color” has two options: “With color and monochrome”. Monochrome is black and white color, “with color” remains the original color. Default setting is “With color”.

“H.264 Profile” supports High profile , main profile , baseline, which is set according to platform supported encoding profile. High Profile is the highest compression efficiency, that is, under the same bitrates, image quality is the best; Baseline is the most widely supported; default setting is High Profile.

“Bitrate control” has two ways: CBR-Constant bitrate and VBR-Variant bitrate. From literal meaning, CBR is stable and unchanged bitrate, while VBR is constantly changing according to actual content. Generally, network transmission adopts CBR to guarantee transmission quality, while file storage uses VBR to guarantee file quality. Default setting is CBR-Constant bitrate.

“Bitrate” supports adjustable 64K-25M. Users could choose default setting, or self-define bitrate size. The higher bitrates, video quality after encoding is better. But specific setting should be based on actual network situation, couldn’t be higher than your own upstream bandwidth.

“Framerate” has three options: FULL (same as input source, HALF (half when source framerate \geq 50 and customized framerate. “FULL” means framerate after encoding is the same as the framerate of input source; “HALF” means if input video is 1920*1080P50, video framerate after encoding will be 25. This will be a good saving on the consumption of network bandwidth; customized framerate is user assigning framerate after encoding, in theory, it shouldn’t be higher than original framerate.

“GOP size” has five options and supports user-defined adjustment. It is adjustable according to actual situation, default is 60, and normally it could meet the most majority of needs.

“Reference frames” has two options: one and multiframe. Theoretically using multiframe can improve encoding quality, but some decoders and players may not support multiframe.

Substream parameter setting refers to Main stream configuration

7.5.3 Streaming media service


E series NDI encoder currently support streaming services include: NDI stream, RTMP push, TS-UDP push, HLS service, SRT service (not support RTSP pull stream currently).

One code stream can run up to 8 stream services at the same time for the encoder, which means it can push the video stream to 8 different live platforms. There are two code streams (the main stream and sub stream) for the encoder, so the encoder can stream up to 16 different live platforms at the same time. In general, the main stream is enough, and the sub stream is mainly used in the security monitoring field to achieve the docking usage with the NVR.


- Motion JPEG stream

Encoder has a Motion JPEG stream, it keeps running without stop. It is blank with blue color if without video access. If with a video signal access, Motion JPEG stream will display the content of current flow, “the video signal lock” displays locked and it will display the current video signal format.

Motion JPEG Snapping
[...]



Video: Motion JPEG (Default)
 Scaling size: Default (720x400)
 Instant bitrate: 1603 Kbps
 Instant frame rate: 5 fps
 Audio engine bundle: [Channel 1 \[Change... \]](#)
 Audio Codec: AAC / Stereo
 Bitrate: 64000 bps
 Actual sampling: 48000 Hz


SET

⚠ Note: Motion JPEG stream is a picture preview, refresh every 3 seconds, or click the mouse to refresh, so it is normal to see it is not fluent on the page.

- RTMP Pushing (Live streaming)

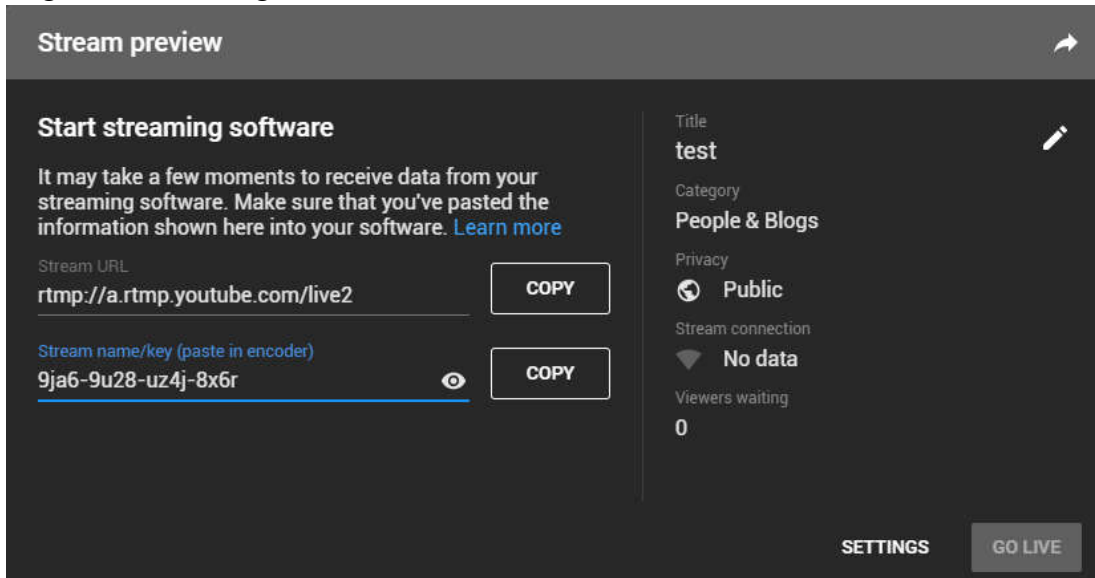
Using RTMP pushing, the first thing is to make sure platform providing RTMP pushing address, otherwise our encoders couldn't do RTMP pushing (Currently some live streaming APP couldn't provide RTMP pushing address.)

⚠ Note: The principle of RTMP push stream is that it must be pushed from the encoder to the platform. The computer/decoder then pulls the RTMP stream from the platform for playback. The encoder cannot directly push the RTMP stream to the computer/decoder for playback.

YouTube live streaming

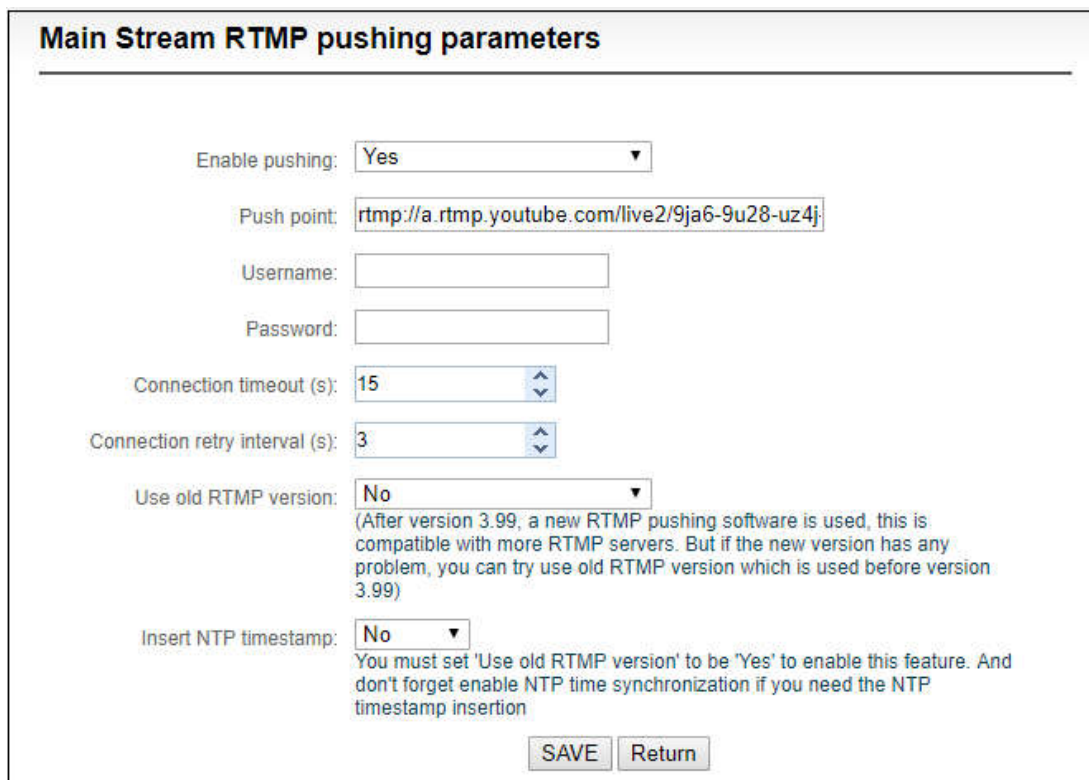
“Streaming point” is RTMP address given by platform (Take YouTube as an example). (Other platforms are similar, if any questions please contact platform technical support for help).

1) Login to YouTube, get below address:



Streaming point should be like Server URL+Stream name/key, for example: rtmp://a.rtmp.youtube.com/live2/9ja6-9u28-uz4j-8x6r

2) After you get the RTMP URL address, you need to set it up in the encoder. In the main stream of H.264, there is a stream service option to be added. By adding a RTMP push, you can get a RTMP push option. Click the settings button on the right side of the RTMP push, and you will enter the interface to fill in the RTMP push configuration. The push address on YouTube platform is filled in the "push point" , and set "Enable pushing" to "Yes". Click “Save”, then RTMP will stream to YouTube.




If the platform requires user name and password verification, you also need to fill in the corresponding parameters in the encoder.

3) On YouTube platform ,if the video can be displayed, the push stream is successful, otherwise you need to check the network and other configurations .

⚠ Note: In the case of RTMPS push mode, fill in rtmps URL at Push point and set 'Use old RTMP version' to yes, so that it can be supported.

- TS-UDP Pushing (unicast and multicast)

Click  [Add a stream...](#) to select TS-UDP Pushing, then entering into TS-UDP setting interface.

TS-UDP pushing divides into unicast and multicast. If using unicast, “pushing target address” is device IP address of receiving TS streaming. “Target port” is any port, but it is better not conflicted with other service port. No need to change Multicast TTL; If using multicast, “pushing target address” needs to write a correct multicast address (224.x.x.x ~ 239.x.x.x). “Target port” is any port, but it is better not conflicted with other service port.

Main Stream TS pushing parameters

Enable pushing:

Target Address:
(Target IP address or multicast IP address. A valid multicast address is 224.x.x.x ~ 239.x.x.x)

Target Port:

Multicast TTL:
(TTL is valid when target address is a multicast address. TTL decides how many routers the multicast packet can pass through.)

TS advanced settings Below are some TS advanced options, if you are not sure how to set these, just please use default settings

NULL packets:

Stream ID:
(1-65535)

PTS to PCR delay:

PMT start PID:
(16-7936)

Stream start PID:
(32-3840)

Tables version:
(0-31)

Service name:

Service provider:

After finishing setting, it will come up an URL address from TS-UDP pushing, which could be decoded through VLC or other decoding player. If it is multicast, please remember to close Windows firewall.

H.264 Main Stream [...]

Video: H.264 (High Profile)
Scaling size: Default (1920x1080)
Instant bitrate: 9384 Kbps
Instant frame rate: 60 fps
Audio engine bundle: Channel 1 [Change...]
Audio Codec: AAC / Stereo
Bitrate: 64000 bps
Actual sampling: 48000 Hz

SET

	Record Start Record	Stopped	
	RTSP (RTSP always start)	Access by: rtsp://192.168.3.155:554/ch01	
	KMP Media Service Start	(Manual disabled or no publish point, service stopped.)	
	HLS Service Stop	Publish point: http://192.168.3.155/hls/main/playlist.m3u8	
	RTMP Pushing Start	(Manual disabled or no publish point, service stopped.)	
	TS-UDP Pushing Stop	Publish point: udp://225.225.5.5:5678	

[Add a stream...](#)

- HLS service

Using HLS service, the first thing is to “add a stream service”, then click right-side SET icon of “HLS service” for setting.

Below is setting interface of HLS service. Very simple, if no special requirements, no need setting, only enable service.

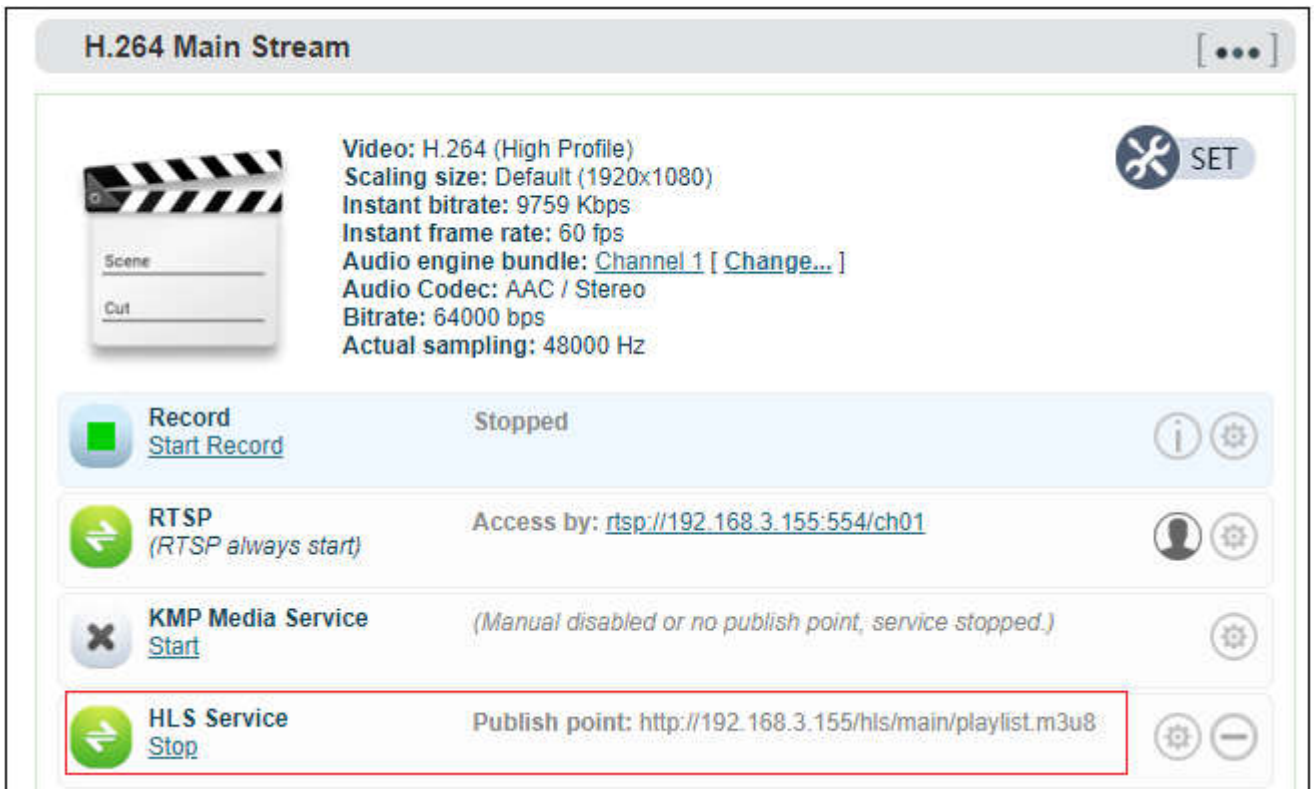
Main Stream HLS service parameters

Enable Service:

Session ID:
(Session ID is the unique identifier for HLS services, it can not be empty)

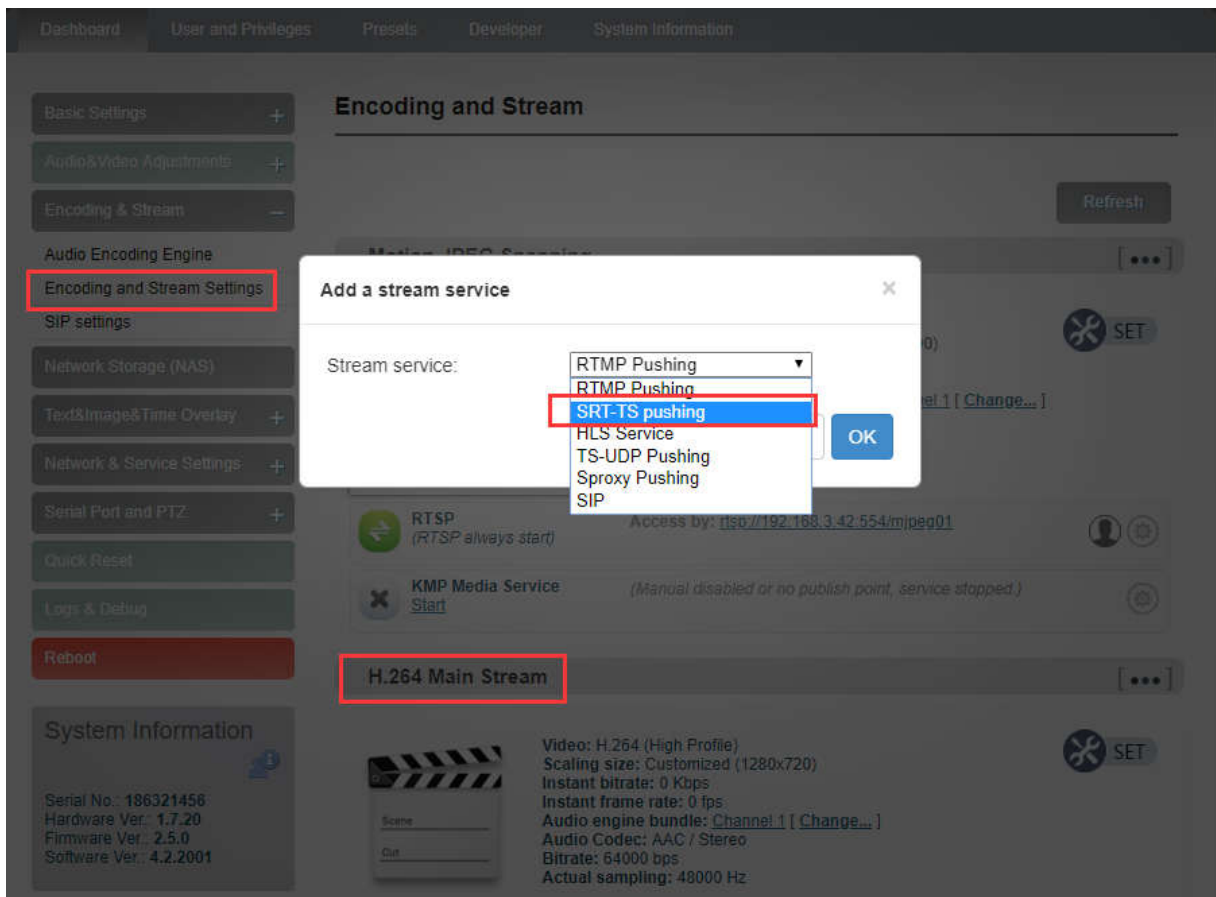
Segment Size: Milliseconds


Once enabling service, it will get one HLS Publish point. You could watch it through VLC and other players using this address.



● SRT service

Click “Encoding & Stream”--“Encoding and Stream Settings”--“H.264 main stream”--“Add a stream”. Choose “SRT-TS pushing”, click “OK” and add a SRT service.



Click the icon  for SRT configuration.



Fill in the pushing address and port, click “Save”. Then SRT pushing is working.

Primary Stream SRT-TS Pushing Parameters

Open SRT service	Yes ▼
Handshake Mode	CALLER ▼
Address	192.168.3.139
Port	6001 ▲▼ <small>(Please fill in the value of 0-65536)</small>
Transport Delay(ms)	125 ▲▼ <small>(Please fill in the value of 0-5000)</small>
Advanced Settings	Open ▼
Encryption mode	AES-128 ▼
AES Key	<input style="width: 100%;" type="text"/> <small>(Please fill in 10-32 letters or numbers.)</small>
Bandwidth Overhead(%)	25 ▲▼ <small>(Please fill in the value of 0-100)</small>
Load Size	1316 ▲▼ <small>(Please fill in the value of 0-1456)</small>
<input type="button" value="Save"/> <input type="button" value="Return"/>	

Setting parameters means the following:

- Open SRT service:yes or no;
- Handshake mode: Caller、Listener、Rendezvous;
- Address: Set IP address of the receiver;
- Port: Set the listening port corresponding to thereceiver;
- Transport delay: Set it based on the performance of the current network, the delay value can be set on both the SRT source device and the SRT target device. The final SRT transmission delay will be the larger one of the two values. Default is 125ms;
- Advanced settings: Open and Close;
- Encryption mode: AES-128, AES-192, AES-256;
- AES key: Encryption key can be 10-32 letters or numbers combination;
- Bandwidth overhead: It is set as the percentage value based on network link quality. Using this value to multiply the total bitrate of the audio and video encoded by the encoder, this will get the occupied maximum bandwidth allowed by Bandwidth Overhead. This value plus the total of video and audio bitrate is the threshold of the current SRT transmission bandwidth, and also the maximum bandwidth that SRT stream can be used. From the perspective of "overhead", it is the extra "invalid" bandwidth to be used in addition to the media content required for transmission (which can be understood as the payload), but it is different from our common protocol overhead, TCP header overhead, UDP header

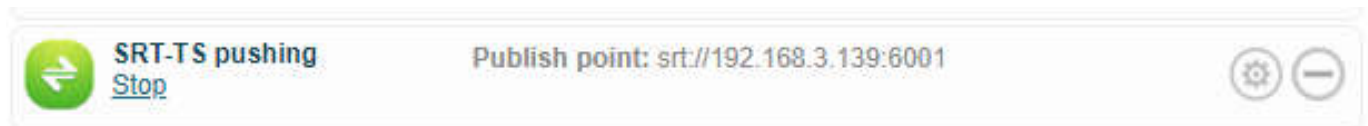
overhead. The bandwidth overhead here is not a fixed 20~60 bytes TCP header overhead or 8 bytes UDP header overhead. It changes in real time according to the network conditions. The worse the network link conditions are, the more overhead needs for normal transmission. The range is 5%~100%, and the default overhead is 25%;

- Load size: Sending data packet size, it is optimal that the receiver should equip with the same size. The default size is 1316, which is the optimal packet for the encoder.

⚠ Note: Below format is the reference delay value under different packet loss. When RTT > 20ms, it requires to increase the delay appropriately.

Network highest packet loss rate (%)	RTT Multiplier	BW Overhead	The lowest SRT delay (when RTT ≤ 20ms)
≤ 1	3	33	60
≤ 3	4	25	80
≤ 7	5	20	100
≤ 10	6	17	120

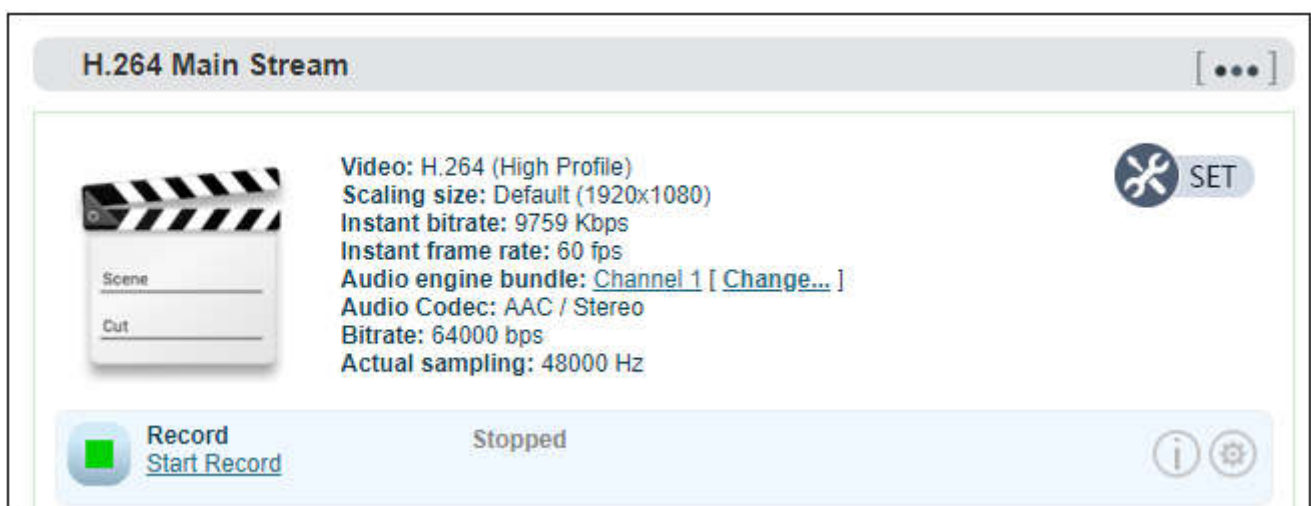
Save the settings, then a SRT-TS pushing address will be added. The encoder starts to initiate a handshake connection to the receiver.




7.6 Local recording

E series NDI encoders support local recording function. Encoder with TF card-slot can support TF recording and meanwhile it supports USB disk inserted into USB port of encoder for recording. The recording operation is as follows:

- 1) Click “Record” below “H.264 Main Stream” under “Dashboard” or “Encoding and stream setting”.



- 2) Click  “Record settings” icon for setting

Main Stream Record Settings

About Record

Set the record parameters here.

Why the default format is 'TS': If you removed USB or SD/MMC disk while recording, a terrible thing may happen that is the recorded file may be wrong and can not play anything, if the file format is '.avi' or '.mp4', etc. But 'TS' format can avoid this, also, the 'TS' format is compatible with almost modern media players.

DON'T use the NTFS! This device can support NTFS file system, but no suggest to use it! The NTFS filesystem can cause high CPU using and affect other streaming functions. If you force to use NTFS, please set the encoding bitrate lower than 8Mbps.

After changed the record settings, it can only take effect in next starting record time!

(Plug in disks) Auto record:

Disk Selection:
Use the largest disk to record files, never care what disk type it is.

Record Format:

Filename Prefix:

File Limitation:


Size Limitation: KB

Overwrite:

⚠ Note: A real challenge for recording by removable disks: If you remove the storage disk while recording, the recorded file may be wrong and can not be played if the file format is '.avi' or '.mp4', etc. But 'TS' format can avoid this, also, the 'TS' format is compatible with almost all the main media players.

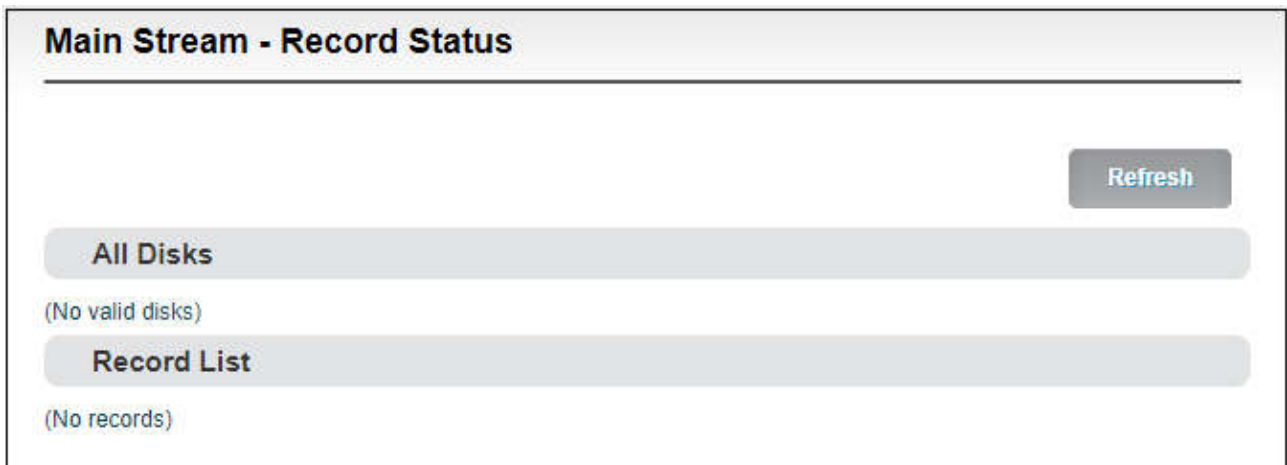
If recording is performed in a non-TS format, when the recording is completed, stop the recording manually, and then remove the storage device to ensure the recording can be played normally.

3) By default, it automatically starts recording when storage disks inserted, regardless its storage type. It will record to the biggest available storage area. Recording format is TS file by default. Users could set recording for automatic cutting based on specified size. And when storage space is insufficient, it will automatically overwrite the old video file to achieve redundant storage.

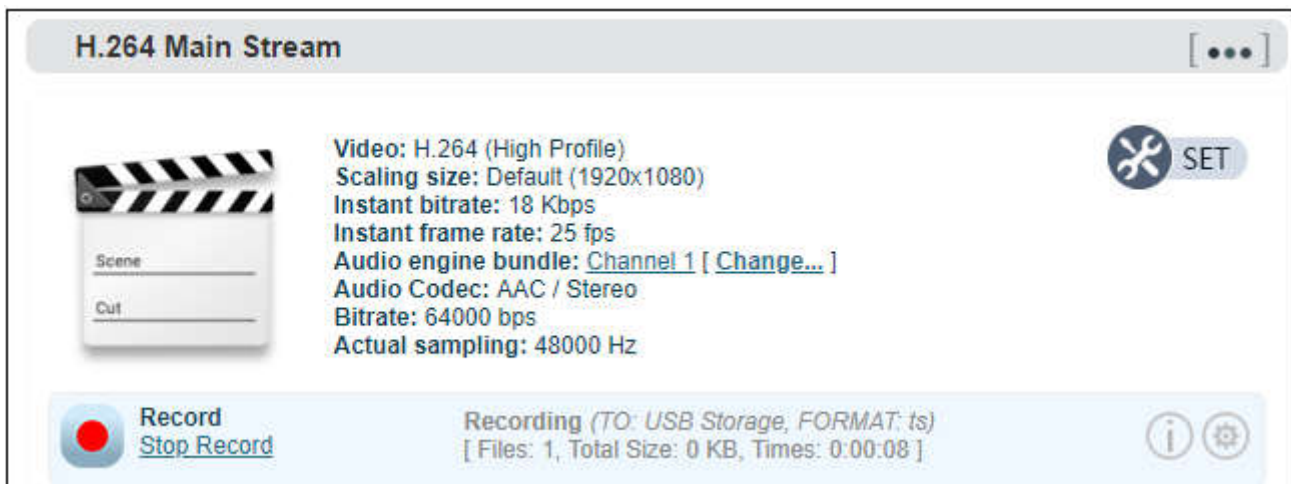
- 4) Click  to check recording status and record list.
- When no disks inserted or NAS network storage not set, the status will be as follows , dashboard will show “Stopped”



Record status shows “No valid disks”and “No records”.



- After inserted disks, the encoder will start recording automatically and the dashboard shows “Recording”.




The "Video Status" is shown below, where you can view the usage of the memory or download the video files that have been stored in the memory to the computer.

Main Stream - Record Status

Refresh

All Disks




WIN10 [vfat]

Total: 29.46 GB, Free: 25.7 GB


Used: 13%

Record List



FILE: REC-20190704151459.ts
291.51 MB
[Download](#)

Sequence: M-20190704_151459_0000 [CURRENT RECORDING]
Start time: 2019-07-04 15:15:11, End time: 2019-07-04 15:18:41; FILES: 1, Total Size: 291.51 MB



FILE: REC-20190702105851.ts
79.49 MB
[Download](#)

- When it is recording, users can stop the recording manually and it can be restarted again.

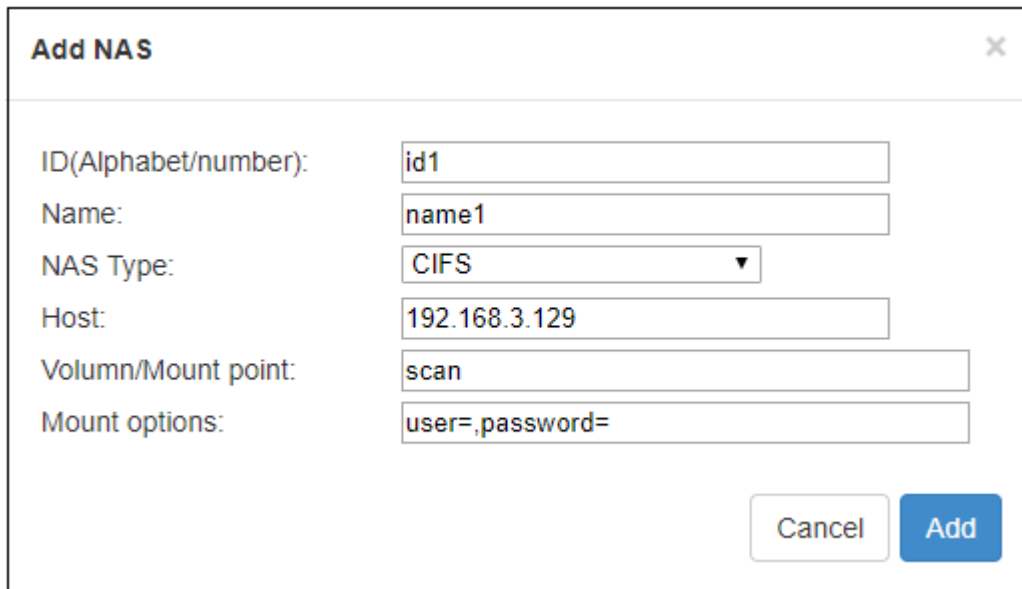
⚠ Note: When recording with TF card, it only supports formats of NTFS.FAT32 or vfat. For TF cards over 64G, the default formatting is exFAT under the formatting program of Windows system, which may lead to the TF card unrecognizable.

Sometimes, due to the influence of some files or programs in the TF card, the TF card can not be recognized. You need to format the TF card once.

7.7 Network Storage (NAS)

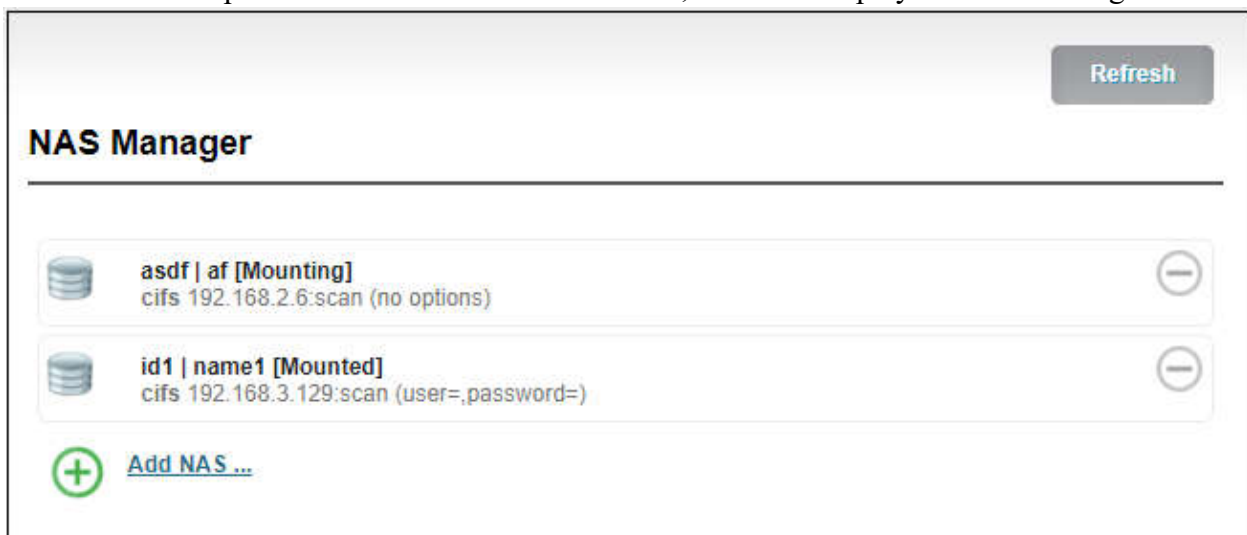
NAS is a Disk Arrays connected by network, it has all the main characteristics of disk arrays: high capacity, high efficiency and high reliability.

Open NAS Manager, click “ add NAS”, then fill in the corresponding parameters.



- ID/ Name: Any Alphabet/number
- NAS Type: NFS or CIFS (CIFS is a shared protocol for network connection, which requires high reliability of network transmission, TCP/IP is usually adopted; NFS is transport-independent,TCP or UDP is adopted; One of the disadvantage of NFS is, it requires the user to install a special software, while CIFS is integrated inside the OS, and no additional software is needed.)
- Host: IP address of the Host
- Volumn/Mount point:Storage location on the host
- Mount options: Settings about the user name and password.

NAS manager will show “Mounted” if NAS connection has been established, and there is a RECORD file under the Mount point. If the connection is abnormal, it will be displayed as “Mounting”.

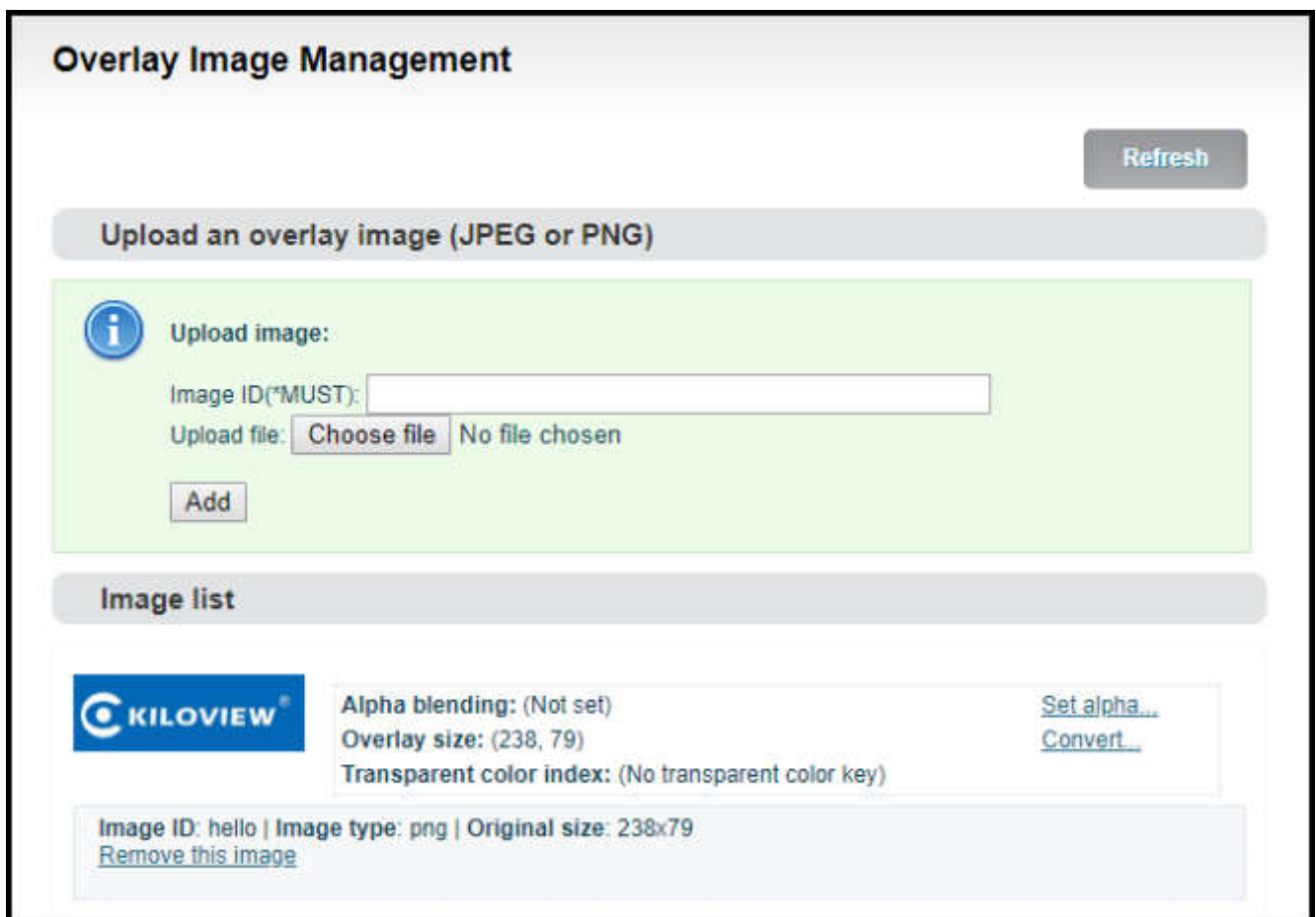


7.8 Text/ Image/Time overlay

Please open the “ Overlay image management” to upload an image first if you want to make image overlay; if text or time overlay, you can set the overlay function directly.

7.8.1 Overlay Image Management

Enter “Image Management” --- fill in “ Image ID-- Choose the image file that you want-- click” Add”, then image is uploaded to the Encoder storage. You can check the image and information listed under the Image list.



You can change the parameters after uploading the image

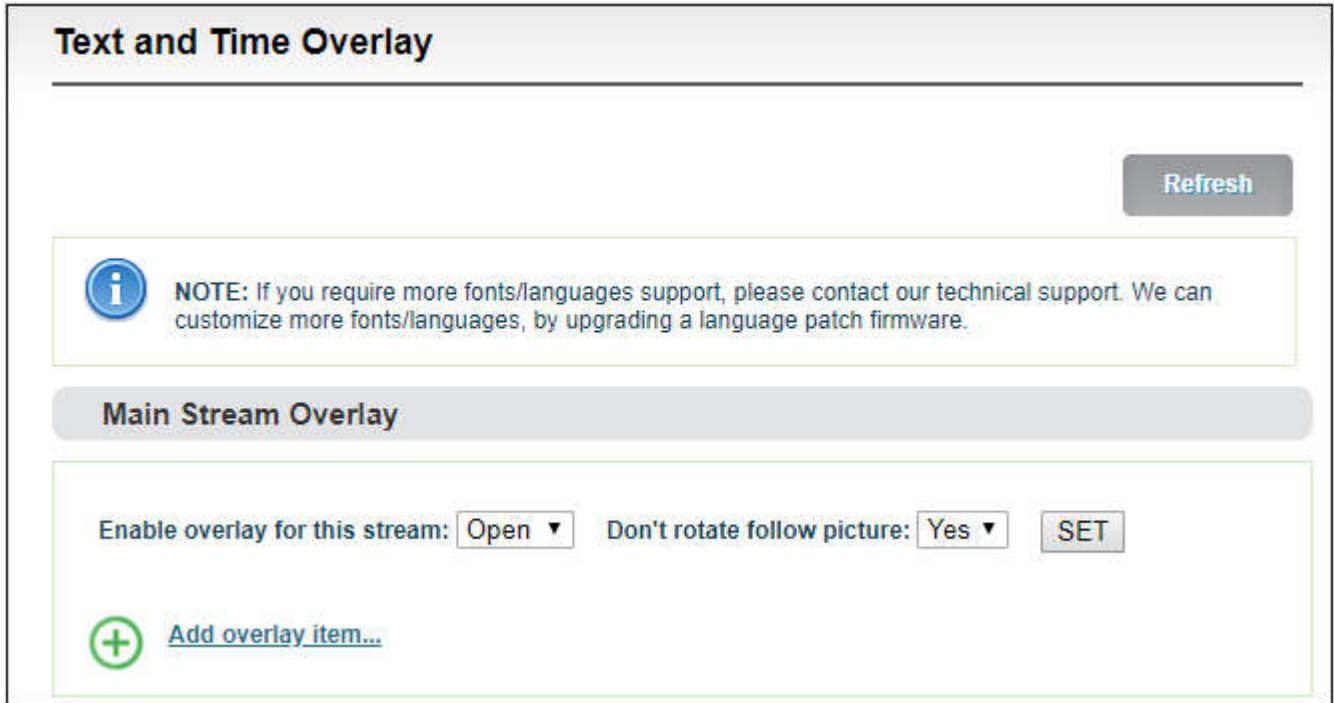
Set alpha blending: Value range is 0-255, 0 is full transparent and 255 is no alpha blending.

Convert:

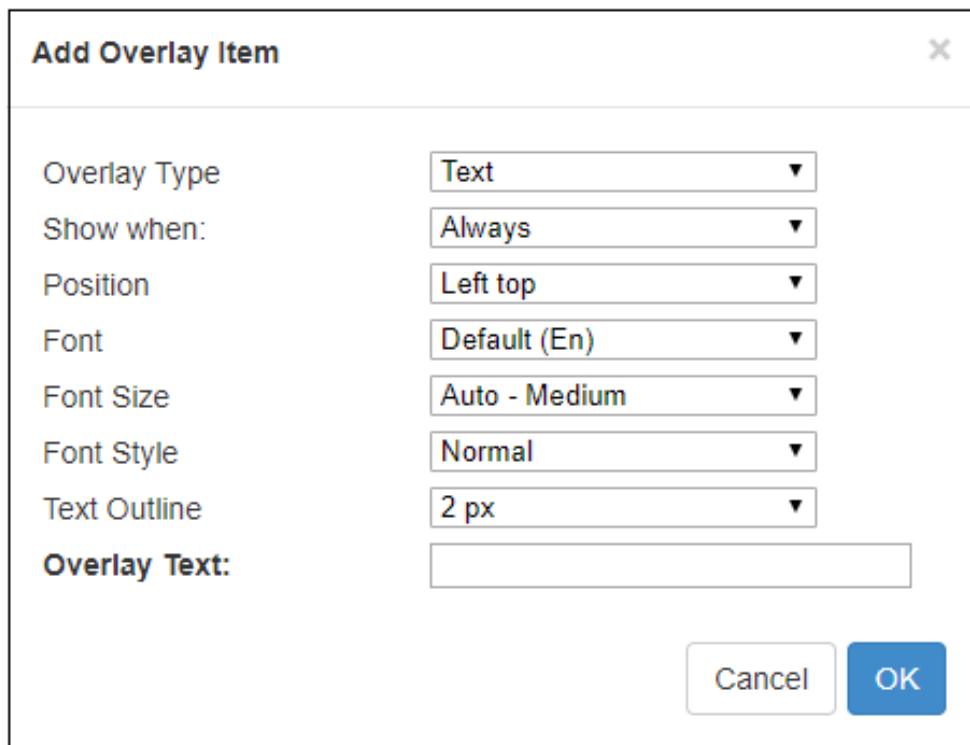
- Image size: If width/height set to 0, it will overlay the image as original size.
- PNG transparent threshold: If the original PNG transparent level is less than the threshold value, overlay that area as full transparent. Set a reasonable value can make the image border be smooth.
- Transparent color index: Manually specify an index color to erase background. Set tolerance (0%~100%) to control the similar color range selection. In most cases, transparent PNG images do not need to be processed manually.

7.8.2 Overlay function

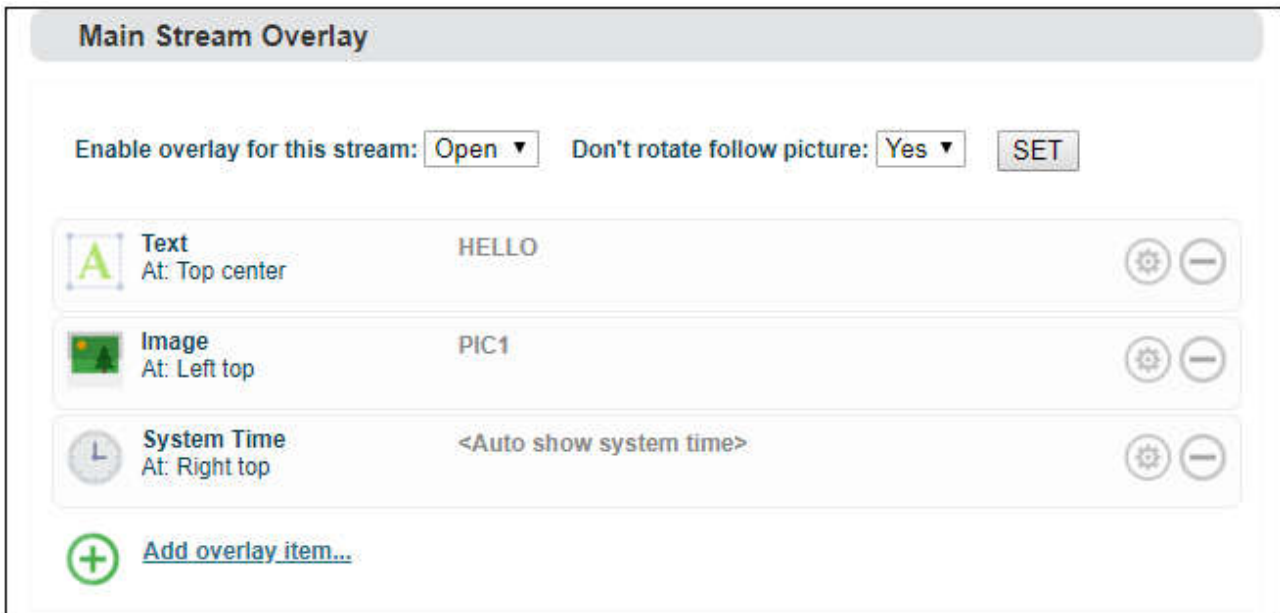
Go to the overlay settings page, in the settings of “Main stream”, please choose “open” to enable overlay, for “Don't rotate follow picture”, please choose yes or no. Then choose “Add overlay item” to set overlay functions for “Text”, “Time” and “Image” respectively. You can set multiple overlays at the same time



Add overlay item (text)



For every overlay, you can set the terms of overlay, position, font and font size, Image or text content and so on. After adding that, it will be shown as follows:



After encoding, the overlay will be shown as follow:



 **Note:**

- *The resolution of uploaded image can not be over the video. If the resolution of the video is 1920*1080, and the uploaded image is 3840*2160, then the image overlay will fail to display.*
- *Please pay attention to the overlay position, if you add image, text and time with the same position, then some overlay may fail to display.*
- *If the added image occupies the majority of the video screen, the actual bitrate and the set bitrate will be greatly reduced due to the low screen dynamic fluctuation.*
- *For the image format, only JPEG and PNG supported.*

7.9 Service Configuration

7.9.1 Web Service Configuration

The default web service port is 80 (https port is 443). You can change it (range: 1-65535) accordingly.

Web Service Configuration

Change the web service port

The default web service port is 80 and https port is 443, but you can change it (range: 1-65535).

NOTE: By HTTPS, if the web browser prompts privacy errors, you need add exception for correct accessing!

Web Service Port:

HTTPS Port:

Note: By HTTPS, if the web browser prompts certificate errors which is caused by the browser certificate security authentication, you will need to add it to the safe list of the browser.

7.9.2 Onvif Service Configuration

Note: Since the NDI discovery function of NDI device use similar principle of onvif, onvif discovery is not supported on E series devices currently.

7.9.3 Telnet Service Configuration

Telnet service listens on port 23 for remote connection and debugging of devices. For security reasons, you can choose to close telnet services.

Telnet service

Open or close telnet service

Telnet is a remote control & debug service, it listens at TCP port 23. For security reason, you can choose to close telnet service.

Telnet service:

7.10 Serial Ports and PTZ

7.10.1 Serial Ports

With USB to RS232/RS422/RS485 adaptor (cable), after connecting to USB port, if the device and identify the serial port correctly, USB port will be listed at “Device”, then you can set the corresponding serial port parameters.

USB to RS232/RS485/RS422 Serial Port

Device: [Refresh serial ports](#)

Baudrate:

Data bits:

Parity:

Stop bits:

XON/XOFF:

RTS/CTS:

⚠️ Note: *The encoder can automatically identify the USB serial port conversion device of universal USB to Serial/FDTI chip/PL2303 chip. If the USB to RS232/RS422/RS485 converter (line) you inserted cannot be recognized and the converter chip is not supported by default, please replace the serial line.*

7.10.2 PTZ Setting

The encoder can control the PTZ camera via Sony Visca.Pelco-D.Pelco-P protocols, you can also set the control speed.

PTZ(Pan/Tilt/Zoom) Setting

PTZ Protocol:

PTZ Address:

Default Pan Speed:

Default Tilt Speed:

Default Zoom Speed:

Default Focus Speed:

Default Iris Speed:

7.10.3 Control Panel

Through the web page of the encoder, you can control the movement, zoom and focus of the camera in all directions.



⚠ Note: In the future, the PTZ function of Newtek Studio Monitor, ONVIF Device Manager and other software can be docked with the encoder control panel through product function docking, so as to realize the direct control of the front-end camera.

7.11 Quick Reset and Reboot

7.11.1 Quick Reset

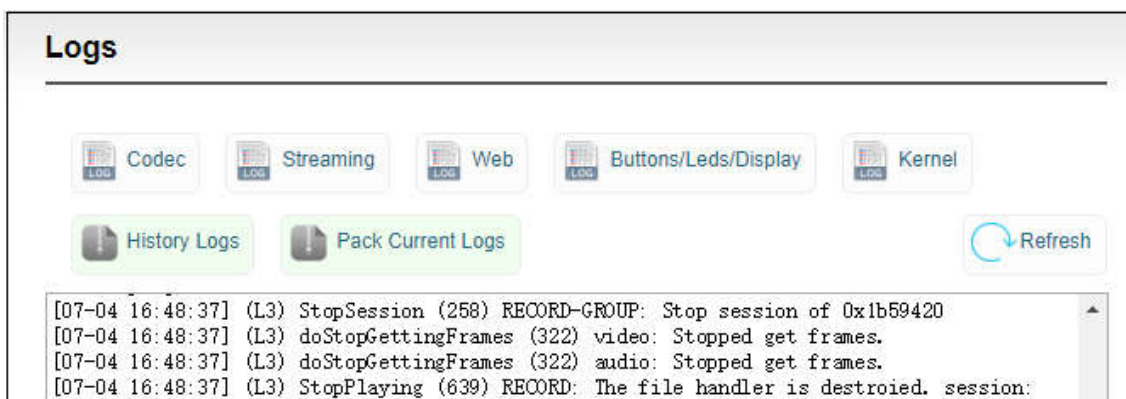
"Quick Reset" is used to quickly reset the video encoding service of the encoder, normally it's used to parameters come into force after modification or encoding abnormal, the current encoding service will be stopped and it will take about 3 seconds.

7.11.2 Reboot

"Reboot" is used to restart the device software, it will take about 3 minutes.

7.12 Logs and Debug

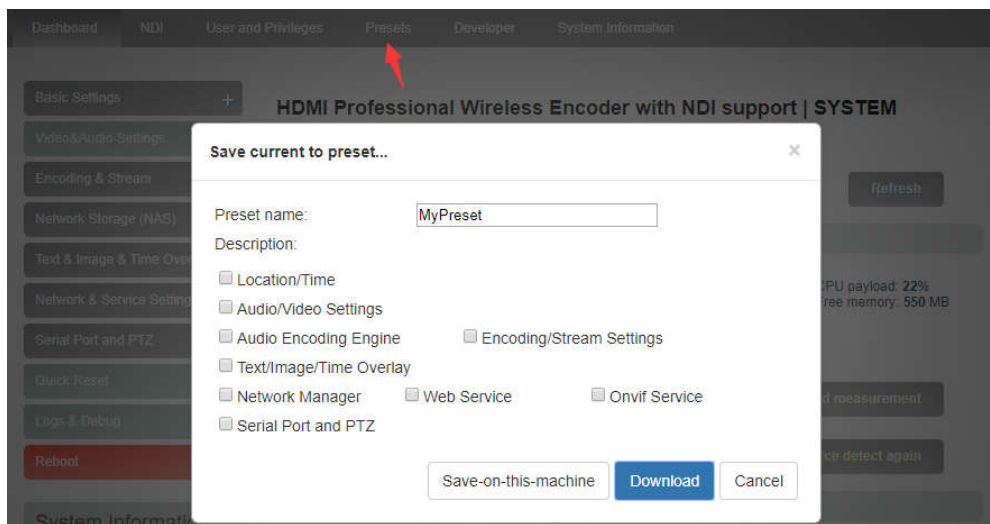
System logs are available for download, which can be provided to technical service engineers for technical analysis.



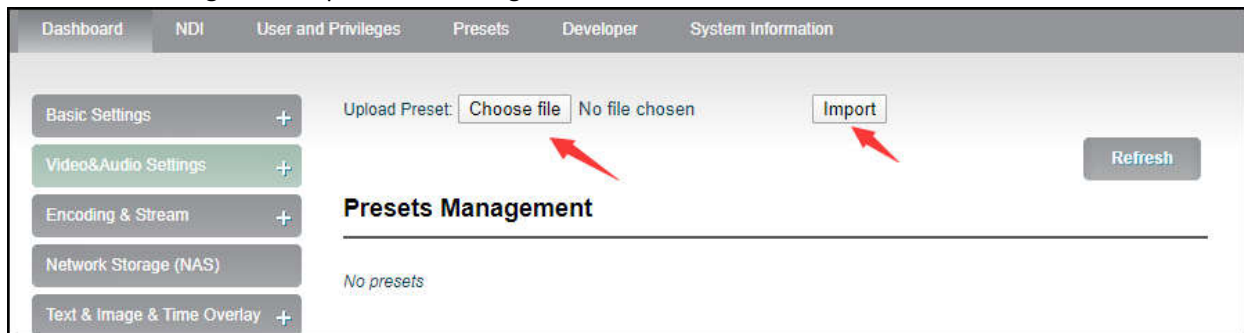
7.13 Preset configuration

When there are multi-device in your system and required to set the same configurations, you could save or download the current configuration parameters to your device, then upload to other devices. After the device is restarted, the preset saved parameters will take effect.

"Preset configuration" - "Save current configuration", you can choose to save the required parameters and download, and the configuration name is customized.



When there are other devices on site or the parameters of your device are restored to the factory, you want to use the parameters previously set. You can upload the saved configuration file in "manage or load preset configuration", restart the device after loading, and the parameter configuration will take effect.



Thank you for reading.

Changsha KILOVIEW Electronics CO.,LTD.

Service Hotline: 86-731-88315979

Website : en.kiloview.com

Technical support Email: support@kiloview.com

WhatsApp: +86-18573195156/18573195256

Skype:kiloview-support/keqiu wang

Address: 188#, Middle Huanbao Rd, Yuhua District, Changsha, Hunan Province, China