



UNIVERSITAT  
POLITÈCNICA  
DE VALÈNCIA



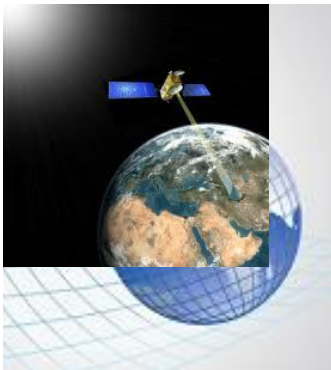
ESCUELA TÉCNICA SUPERIOR  
DE INGENIERÍA GEODÉSICA  
CARTOGRÁFICA Y TOPOGRÁFICA

A 3D rendering of a globe where the landmasses are replaced by a green printed circuit board (PCB) with various electronic components like chips, capacitors, and traces. The oceans are shown in blue.

# MASTER'S PROGRAMME IN GEOMATICS ENGINEERING AND GEOINFORMATION



- **Branch:** IT / Engineering/ Architecture
- **Implementation year:** Academic year 2010/11
- **Aimed at** graduates who want to deepen their insight in Geomatics:
  - Graduates in Geomatics and Surveying Engineering
  - Other engineering
- **GEOMATICS:** Discipline devoted to collecting, storing, processing and visualising of georeferenced information (geo-information) using multiple techniques:



Remote Sensing	Photogrammetry
Cartography	Geographic Information Systems
Geostatistics	3D modelization
Global Navigation Satellite Systems (GPS, Galileo...)	
...	

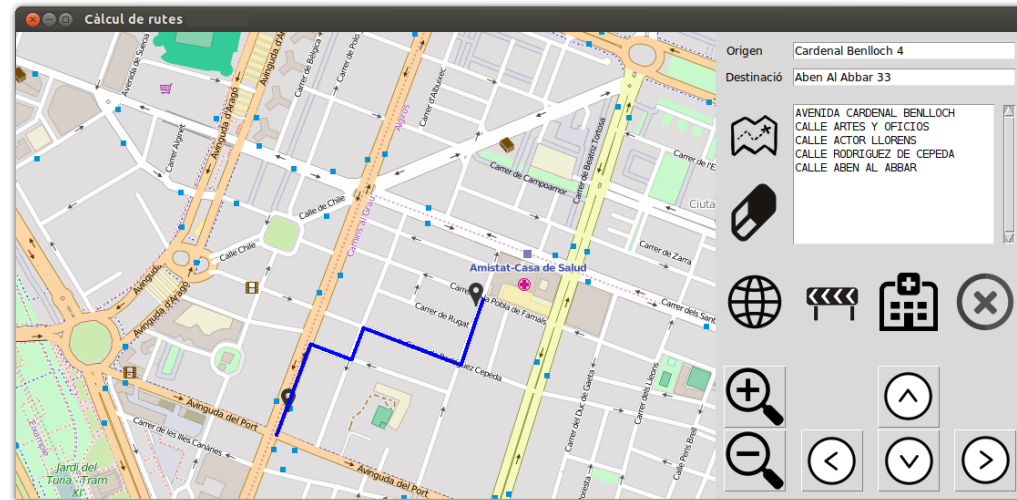
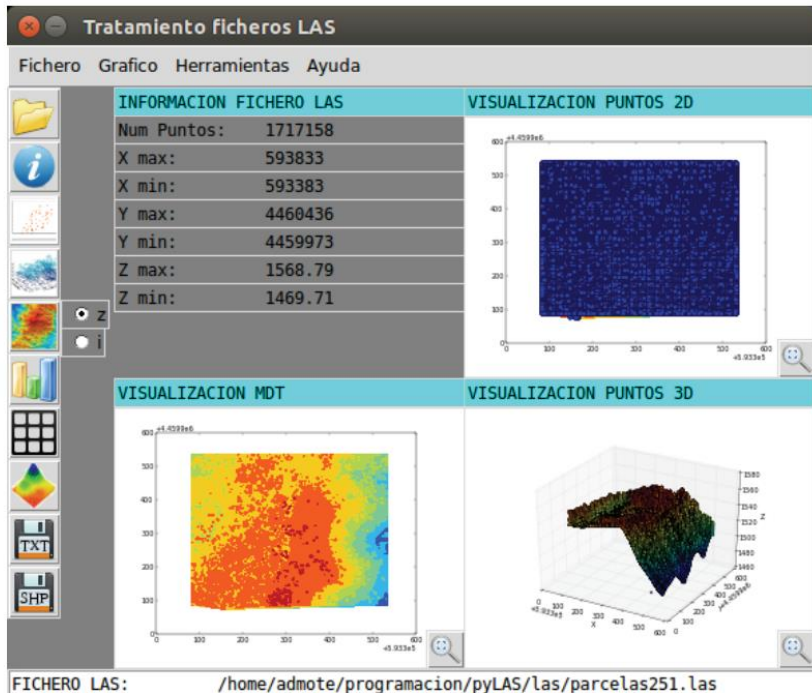
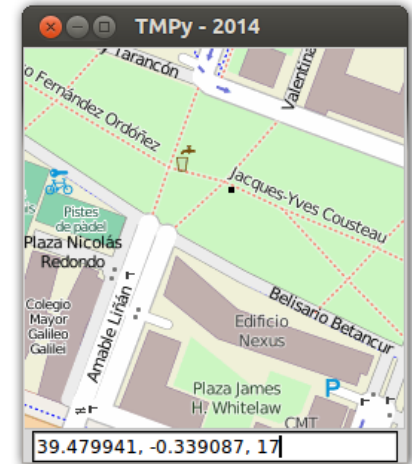
# SYLLABUS (EF)

**120 ECTS**  
**4 SEMESTERS**

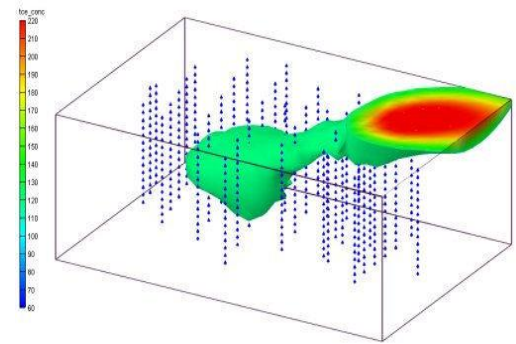
FIRST YEAR					
Semester A			Semester B		
Subject	ECTS	Category	Subject	ECTS	Category
Programming for Geospatial Applications	EF 6	Compulsory	Web Development and Geoportals	EF 6	Compulsory
Geostatistics and Multivariate Analysis	EF 6	Compulsory	Distribution of Spatial Information	EF 6	
Urban Planning and Cadastre	EF 6	Compulsory	GIS Application Development	EF 6	
Geomatic Applications in Geomarketing	EF 6	Elective	Positioning	EF 6	
Big Data/ Data Mining	EF 6	Elective	Geospatial Content Managers and Smart Cities <b>Completely in English.</b>	6	Elective
SECOND YEAR					
Semester C			Semester D		
Subject	ECTS	Category	Subject	ECTS	Category
Remote Sensing and Cartographic Updating	EF 6	Compulsory	Instrumentation for Spatial Data Acquisition	6	Elective
Environmental Mapping and Modelling	EF 6		Geovisualisation y 3D Modelling	EF 6	
Techniques for Heritage and Architectural Documentation	EF 6		Work Placement	EF 6	
Sensor Georeferencing and Navigation	EF 6		Master Thesis	EF 18	Compulsory
Geospatial Apps in Mobile Devices	EF 6				

EF → English Friendly (doubts and tutorial classes, exams and presentations).

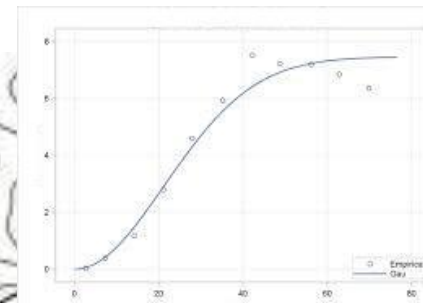
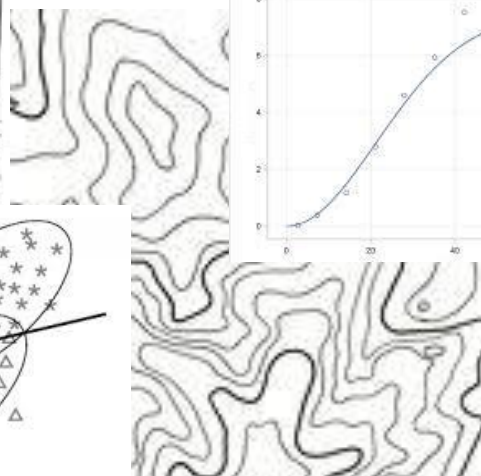
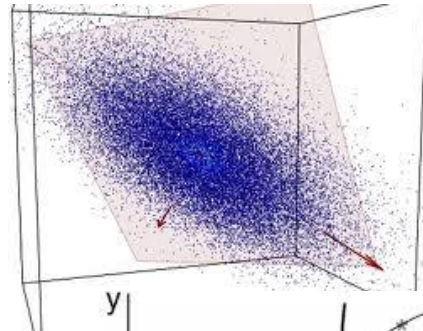
# PROGRAMMING FOR GEOSPATIAL APPLICATIONS



# GEOSTATISTICS AND MULTIVARIATE ANALYSIS

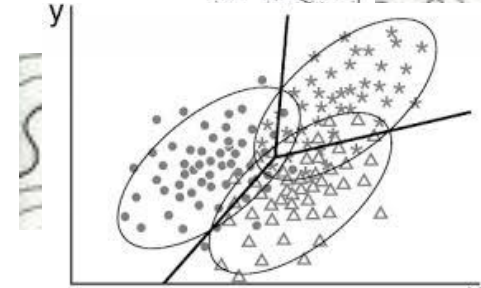


Correlations



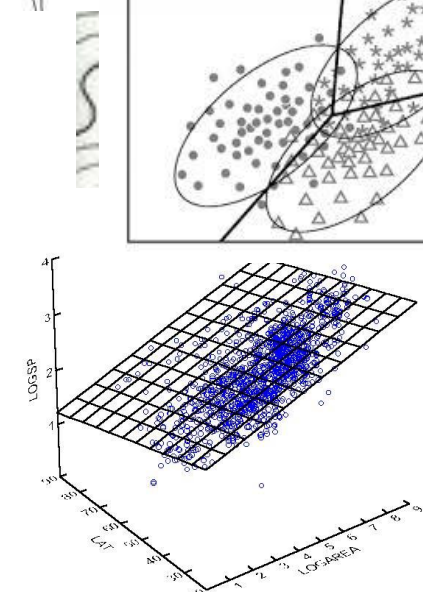
Semivariogram

PCA



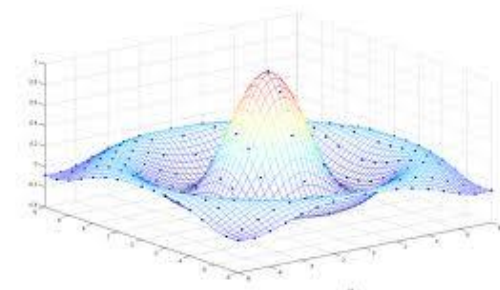
Kriging

Discriminant Analysis



Cokriging

Multiple Regression



Interpolation

# URBAN PLANNING AND CATASTRE



## URBAN PLANNING

- Spanish Regulations in Urban Planning and Management
- Urban Plan Typologies
- Cartography in Urban Planning

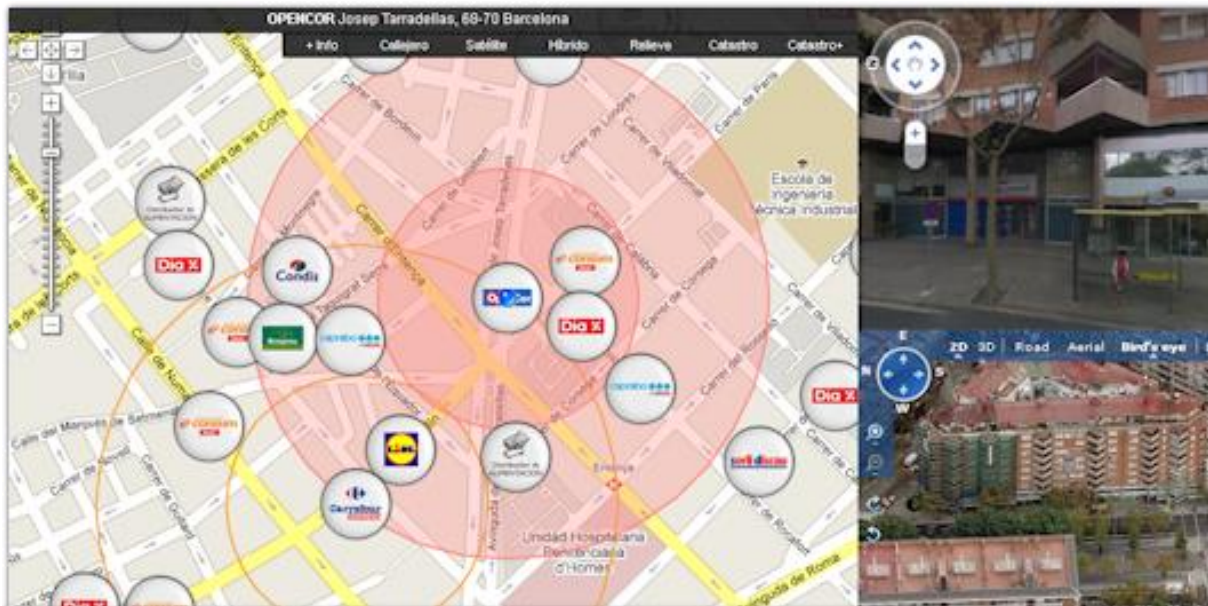
## CADASTRE

- Cadastre and Land Registry Coordination
- Cadastral Regularisation
- International Cadastre Models. Géomètre Expert
- The Land Administration Domain Model (LADM)

# GEOMATIC APPLICATIONS IN GEOMARKETING



- Geomarketing provides information for making business decisions based on spatial localization.
- Analysis of a business through the exact location of customers, points of sale, branches, etc., locating them on a map through symbols and personalized colors to make profitable commercial actions.






# BIG DATA / DATA MINING

1. STORAGE
2. ANALYSIS TOOLS
3. DATA MINING

## Machine Learning

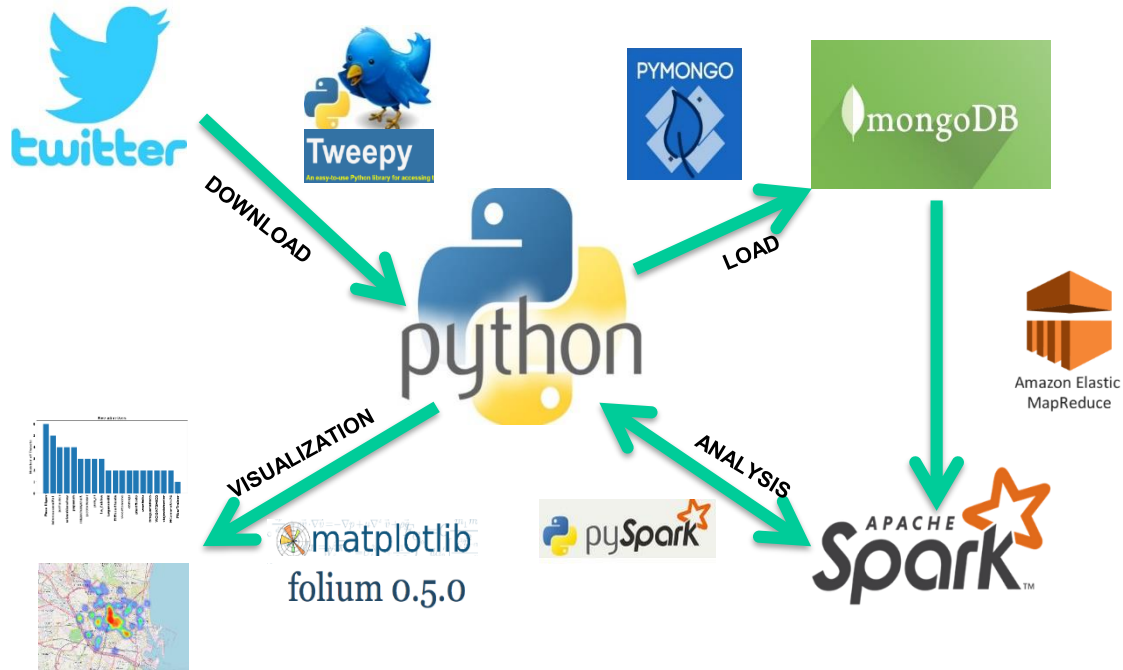
### Supervised

- Classification
  - Naïve Bayes
  - SVM
  - Random Decision Forests
- Regression
  - Linear
  - Logistic



### Unsupervised

- Clustering
  - K-means
- Dimensionality reduction
  - Principal Component Analysis
  - SVD



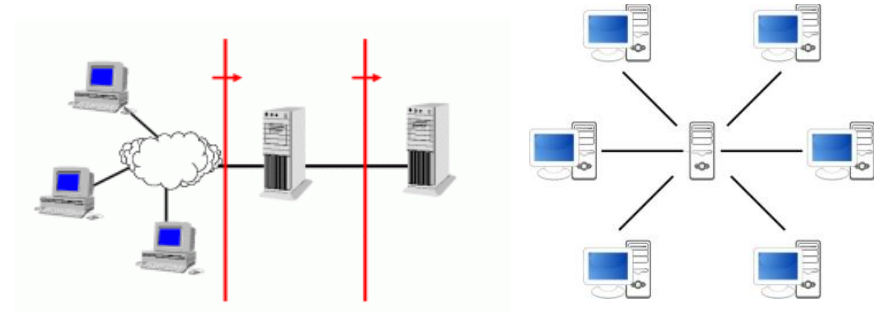


# WEB DEVELOPMENT AND GEOPORTALS



Information Architectures:  
Web and Client-Server

Languages



Frameworks:



Advanced Geoportal

Geoservices OGC  
Server Programming



# DISTRIBUTION OF SPATIAL INFORMATION



REGULATIONS

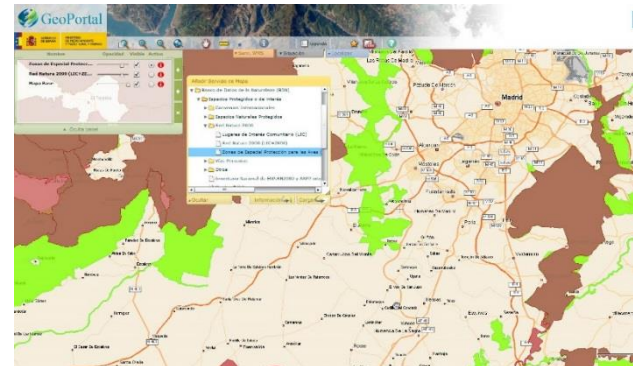


# LISIGE

SPECIFICATIONS

- Hydrography
- Land Use
- Transportation Networks
- Urban Areas

...



METADATA



Spatial analysis tools

DATA MODELS MANAGEMENT

# GIS APPLICATION DEVELOPMENT

Development language: **Python**



Programming Environments:

**Arcpy** (ArcGIS)

**PyQGIS** (Quantum GIS)



# POSITIONING



## Computation Algorithms Software and Techniques Applications



GNSS multiconstellation

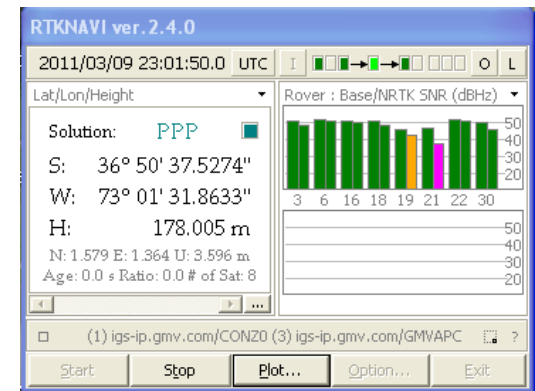
Positioning Equations: programming

PPP: Precise Point Positioning

Atmosphere, Ionosphere (Galileo), Troposphere (Climate)

Wide Area DGPS

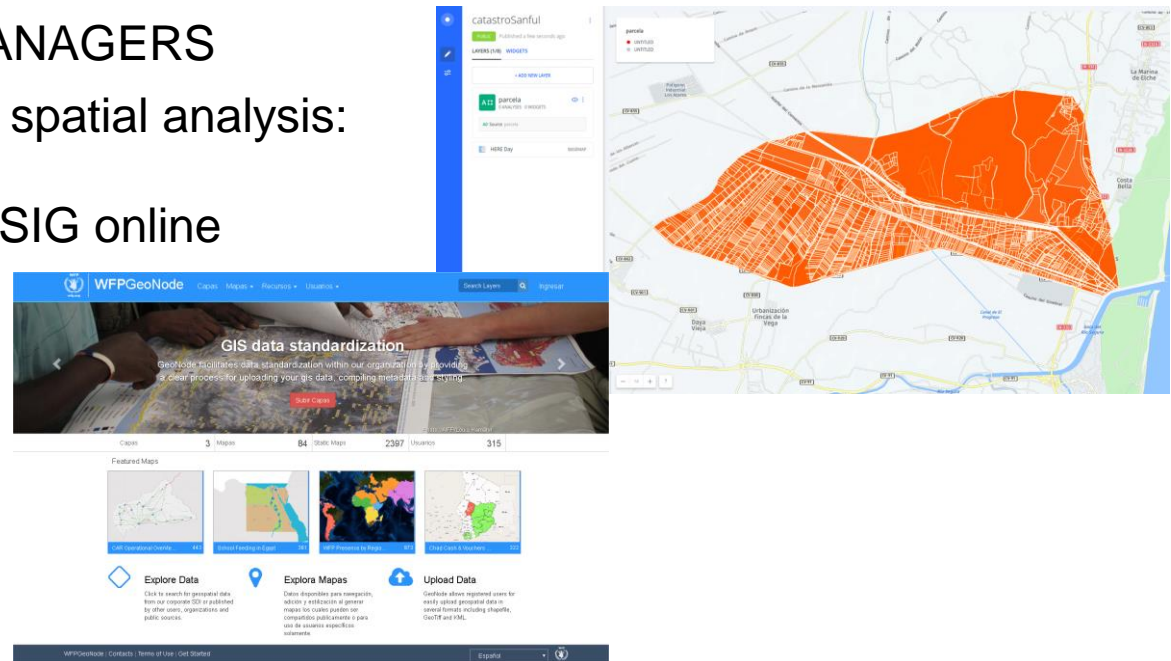
Kinematic GPS RTK (Agriculture)



# GEOSPATIAL CONTENT MANAGERS AND SMART CITIES

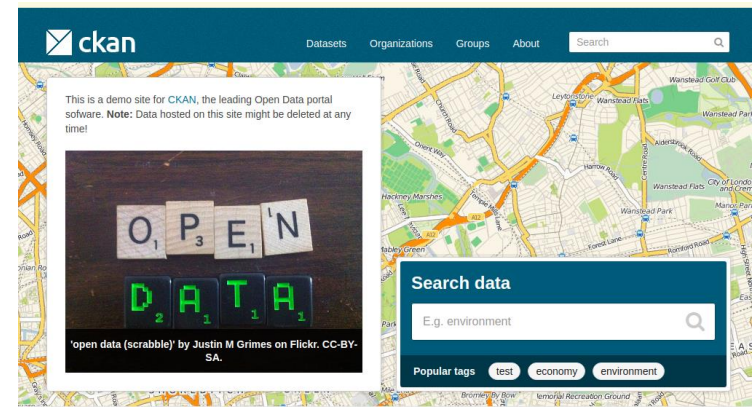
## 1. GEOSPATIAL CONTENT MANAGERS

- Web mapping and online spatial analysis: CartoDB, Geocloud
- GeoNode, Geoshape, gvSIG online
- OpenData: CKAN.

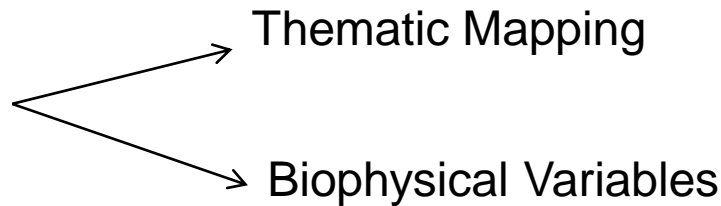
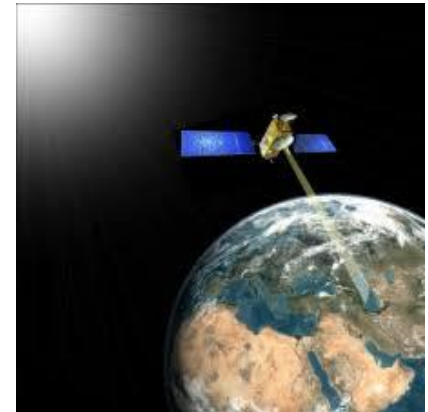


## 2. SMART CITIES

CKAN: <http://docs.ckan.org/en/latest/>



# REMOTE SENSING AND GEODATABASE UPDATING



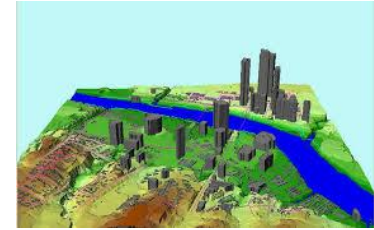
Earth Observation Programmes  
Soil Use Databases



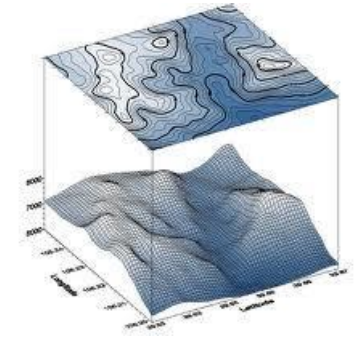
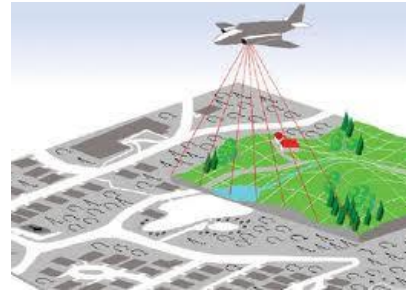
Image Segmentation  
Feature Extraction  
Variable Selection  
Classification Methods  
Sampling  
Morphologic Filters

Database Updating

# ENVIRONMENTAL MAPPING AND MODELLING



## DIGITAL ELEVATION MODELS



## INTEGRATION WITH GEOSPATIAL DATASETS

Climate  
Geology  
Satellite images...

Geomorphologic Analysis  
River and Coast Dynamics  
Fire Ecology  
Risk Analysis



# TECHNIQUES FOR HERITAGE AND ARCHITECTURAL DOCUMENTATION



## Capture / Processing / Analysis

Visible / Thermal / Multispectral



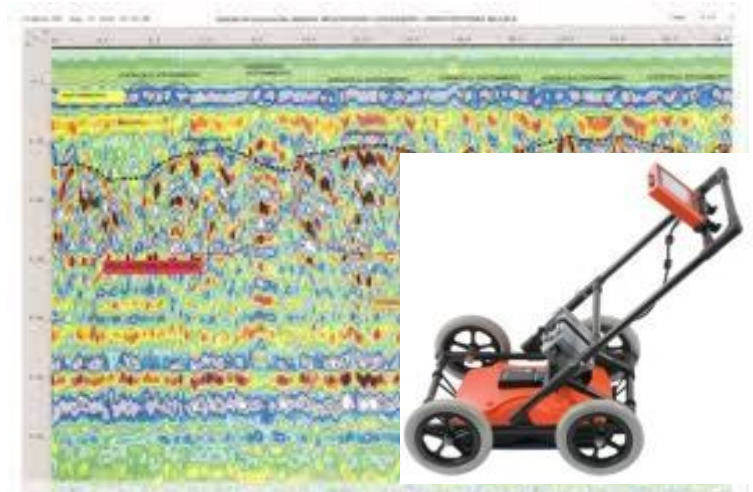
Laser Scanner

Georadar



## Monitoring / Diagnosis

## APPLIED PROJECT

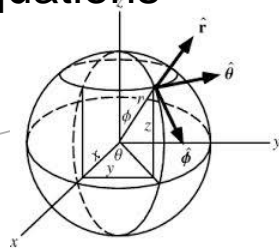




# SENSOR GEOREFERENCING AND NAVIGATION



Coordinate Systems  
Navigation Equations



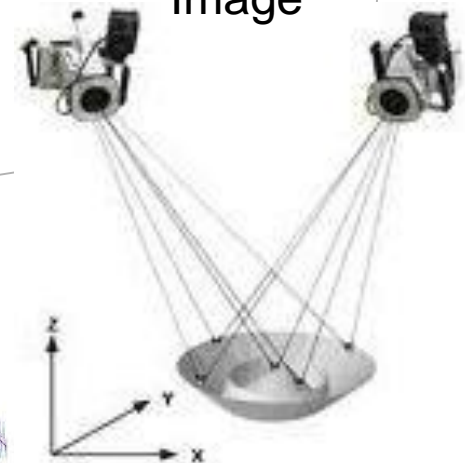
INS



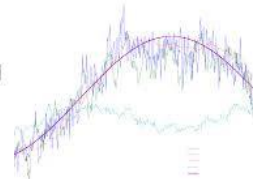
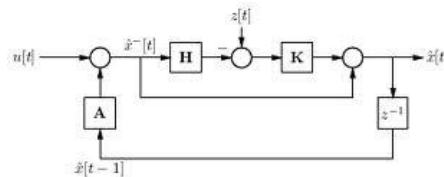
GNSS



Image



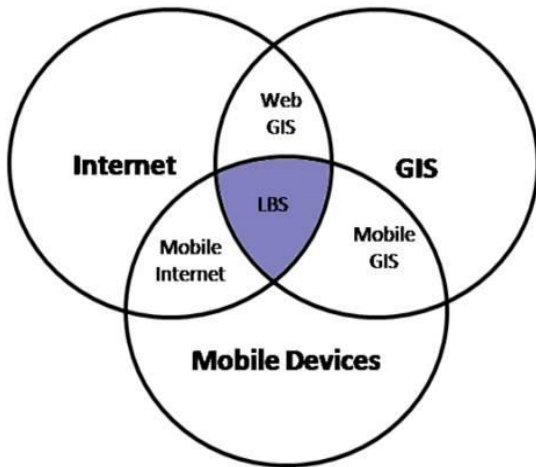
Integration  
Kalman Filters



# GEOSPATIAL APPS IN MOBILE DEVICES



## Location Based Services (LBS)



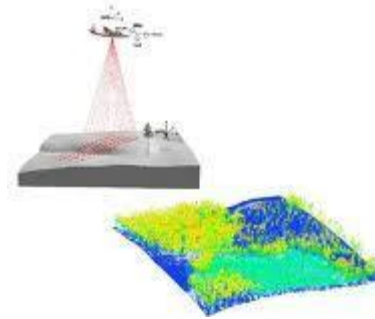
## Smart Cities



# INSTRUMENTATION FOR SPATIAL DATA ACQUISITION

Geomatics project using multiple collection techniques

Laser Scanner



LIDAR

GNSS



GPR

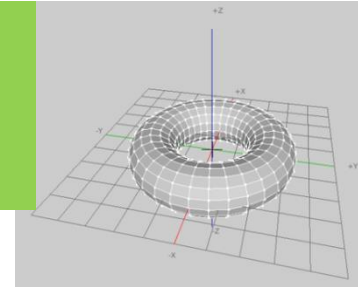


UAV



Close-Range Photogrammetry

# GEOVISUALISATION AND 3D MODELLING



Principles of visualisation

2D, 3D and 4D techniques



3D modelling in archaeology, landscape,...

Augmented reality





# DOUBLE DEGREES



*École Spéciale des Travaux Publics*  
Paris (France)



*University of Applied Sciences*  
Karlsruhe (Germany)



# Methodology

Combination of **theory** and **practical applications**

**Seminars** and **workshops**

**Work placements** (elective)

**Visits** to private companies and public institutions and talks by experienced professionals from the different fields of Geomatics



INSTITUT  
CARTOGRÀFIC  
VALENCIÀ

INSTITUTO  
GEOGRÀFICO  
NACIONAL





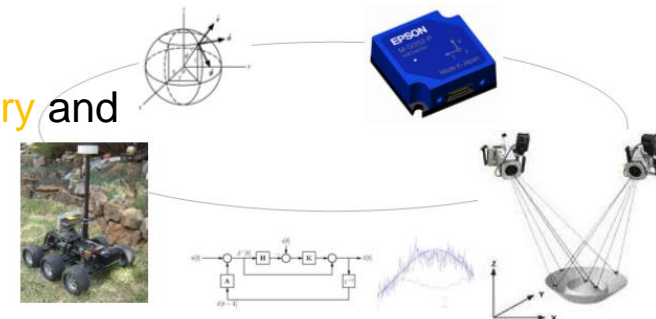
# Partners





# Geomatics students will learn to...

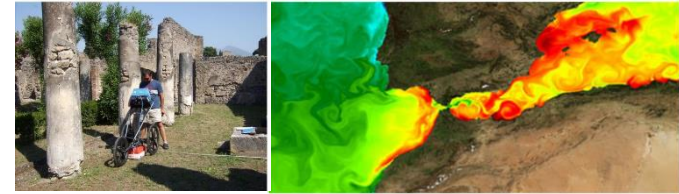
- Work with data collected with different **Global Navigation Satellite Systems** (GPS, Galileo, GLONASS, etc.)
- Develop **mapping applications for mobile devices** (*smartphones, tablets, etc.*)
- **Integrate Sensors** for navigation purposes (using GNSS, inertial sensors and imagery)
- Work with **cartographic models** for **environmental and natural hazard studies**.
- Manage resources using **Geographic Information Systems (GIS)**.
- Set up **map servers** and **geoportals**.
- Use **multispectral satellite images** for updating cartographic databases.
- Manage **3D data** obtained by **LiDAR or laser scanner**.
- Apply the methodology for **heritage documentation**.
- Manage databases for **cadastral information, real state registry and territory**.







# Graduate employability



Our graduates develop highly valued skills and abilities both in the **public** (mapping agencies, environment or transportation departments, etc) and **private sectors** (construction companies, consulting firms, service providers, etc)

CAREERS AND RECRUITMENT

## Mapping opportunities



Scientists who can combine geographic information systems with satellite data are in demand in a variety of disciplines.

©2004 Nature Publishing Group

NATURE | VOL.427 | 22 JANUARY 2004 | www.nature.com/nature

2013 OXERA report for Google on the economic impact of geoservices





# DOCTORATE PROGRAMME IN GEOMATIC ENGINEERING BY THE UNIVERSITAT POLITÈCNICA DE VALÈNCIA AND THE UNIVERSIDAD POLITÉCNICA DE MADRID



3 years in a consolidated group working in competitive and funded Research and Development projects

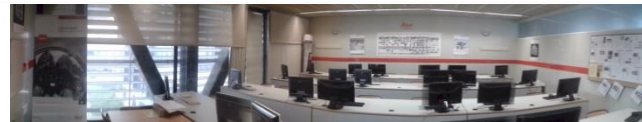


Current business partners:





- **LABORATORIES AND SEMINARS**
- **With last generation instruments and sensors**
  - GNSS receivers (Topcon, Trimble and Leica)
  - Total stations
  - Laser Scanner Scanstation2
  - Georradar GPR gssi 3000
  - Seismograph
  - Data processing and analysis software (Bernese, CAD/ArcGIS/ENVI)
  - 2 UAVs





# • Training for employment

- Employment forum
- Business days
- Sponsored rooms: Topcon and Leica
- Entrepreneurship formation:
  - Start-UPV space
- Work placements in international companies
- Students visits to prestigious companies (ESA, IGN, ICC, ICV, GMV...)

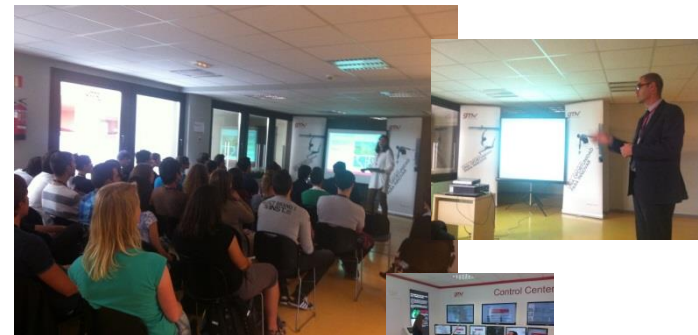
Foro de empleo en la UPV



ESA. 2013



IGN. 2014



GMV. 2015



## Further information:

<http://www.upv.es/entidades/ETSIGCT/infoweb/euittop/info/880897normali.html>

<https://geomatriculaupv.webs.upv.es/master-en-ingenieria-geomatricula-y-geoinformacion/>



## Follow us:



<http://www.facebook.com/GeomatriculaUPV>



@GeomatriculaUPV



UNIVERSITAT  
POLITÈCNICA  
DE VALÈNCIA



ESCUELA TÉCNICA SUPERIOR  
DE INGENIERÍA GEODÉSICA  
CARTOGRÁFICA Y TOPOGRÁFICA



# MASTER'S PROGRAMME IN GEOMATICS ENGINEERING AND GEOINFORMATION

2018-2019